

Energetics of turbulence generated by chiral MHD dynamos

J. Schober, A. Brandenburg, I. Rogachevskii & N. Kleeorin

To cite this article: J. Schober, A. Brandenburg, I. Rogachevskii & N. Kleeorin (2019) Energetics of turbulence generated by chiral MHD dynamos, *Geophysical & Astrophysical Fluid Dynamics*, 113:1-2, 107-130, DOI: [10.1080/03091929.2018.1515313](https://doi.org/10.1080/03091929.2018.1515313)

To link to this article: <https://doi.org/10.1080/03091929.2018.1515313>



Published online: 12 Sep 2018.



Submit your article to this journal [↗](#)



Article views: 32



View Crossmark data [↗](#)



Citing articles: 1 View citing articles [↗](#)



Energetics of turbulence generated by chiral MHD dynamos

J. Schober^a, A. Brandenburg^{b,c,d}, I. Rogachevskii^{b,e} and N. Kleeorin^{b,e}

^aLaboratoire d'Astrophysique, EPFL, Sauverny, Switzerland; ^bNordita, KTH Royal Institute of Technology and Stockholm University, Stockholm, Sweden; ^cLaboratory for Atmospheric and Space Physics, JILA and Department of Astrophysical and Planetary Sciences, University of Colorado, Boulder, CO, USA; ^dDepartment of Astronomy, Stockholm University, Stockholm, Sweden; ^eDepartment of Mechanical Engineering, Ben-Gurion University of the Negev, Beer-Sheva, Israel

ABSTRACT

An asymmetry in the number density of left- and right-handed fermions is known to give rise to a new term in the induction equation that can result in a dynamo instability. At high temperatures, when a chiral asymmetry can survive for long enough, this chiral dynamo instability can amplify magnetic fields efficiently, which in turn drive turbulence via the Lorentz force. While it has been demonstrated in numerical simulations that this chiral magnetically driven turbulence exists and strongly affects the dynamics of the magnetic field, the details of this process remain unclear. The goal of this paper is to analyse the energetics of chiral magnetically driven turbulence and its effect on the generation and dynamics of the magnetic field using direct numerical simulations. We study these effects for different initial conditions, including a variation of the initial chiral chemical potential and the magnetic Prandtl number, Pr_M . In particular, we determine the ratio of kinetic to magnetic energy, γ , in chiral magnetically driven turbulence. Within the parameter space explored in this study, γ reaches a value of approximately 0.064–0.074— independently of the initial chiral asymmetry and for $Pr_M = 1$. Our simulations suggest, that γ decreases as a power law when increasing Pr_M by decreasing the viscosity. While the exact scaling depends on the details of the fitting criteria and the Reynolds number regime, an approximate result of $\gamma(Pr_M) = 0.1 Pr_M^{-0.4}$ is reported. Using the findings from our numerical simulations, we analyse the energetics of chiral magnetically driven turbulence in the early Universe.

ARTICLE HISTORY

Received 15 March 2018
Accepted 20 August 2018

KEYWORDS

Relativistic magnetohydrodynamics (MHD); chiral MHD dynamos; turbulence; early universe

1. Introduction

Turbulence and magnetic fields are closely connected in many geophysical and astrophysical flows: Magnetohydrodynamic (MHD) dynamos are often related to turbulence, so, for example, in the cases of the small-scale (Kazantsev 1968, Kulsrud and Anderson 1992) and large-scale dynamos, especially those driven by helical turbulent motions causing the α effect (Parker 1955, Steenbeck *et al.* 1966). On the other hand, the Lorentz force resulting from magnetic fields can drive turbulent motions. How much magnetic energy can be converted into kinetic energy depends on various properties of the plasma, characterised by the

fluid and magnetic Reynolds numbers, and the structure of the magnetic field. Hence, turbulence is a key ingredient for understanding the origin and evolution of cosmic magnetic fields.

Observational constraints on the lower limits on the strength of intergalactic magnetic fields (Neronov and Vovk 2010, Dermer *et al.* 2011) challenge theoretical scenarios like the ones including the turbulent dynamo. A theory explaining these possible remains of primordial fields includes the generation of seed fields on small spatial scales, below the co-moving Hubble radius of the early Universe, and a subsequent cascade to larger scales in decaying MHD turbulence either with magnetic helicity (Brandenburg *et al.* 1996, Biskamp and Müller 1999, Field and Carroll 2000, Kahniashvili *et al.* 2013, Brandenburg *et al.* 2017a) or without (Zrake 2014, Brandenburg *et al.* 2015). Cosmological seed fields, however, are a highly debated topic in modern cosmology; see e.g. Grasso and Rubinstein (2001), Kulsrud and Zweibel (2008), Subramanian (2016). In addition to various generation mechanisms suggested in the literature, seed fields have recently been connected to a microphysical effect that is related to the two opposite handedness of fermions. In the presence of an external magnetic field, the momenta of fermions align along the field lines according to their spin: right-handed fermions are accelerated along the field lines, while left-handed ones are accelerated in the opposite direction. Collisions between particles lead to a constant flow along the field lines, with the direction depending on the handedness. Consequently, an asymmetry in the number density of left- and right-handed charged particles leads to a net current along the magnetic field. This effect is called the *chiral magnetic anomaly* (Vilenkin 1980, Redlich and Wijewardhana 1985, Tsokos 1985, Alekseev *et al.* 1998, Fröhlich and Pedrini 2000, 2002, Kharzeev *et al.* 2008, Fukushima *et al.* 2008, Son and Surowka 2009) and the resulting current can lead to a magnetic dynamo instability (Joyce and Shaposhnikov 1997). Especially the studies of the chiral inverse magnetic cascade and the evolution of a non-uniform chiral chemical potential by Boyarsky *et al.* (2012, 2015) who found that a chiral asymmetry can, in principle, survive down to energies of the order of 10 MeV ($\approx 10^{11}$ K), made this effect an interesting candidate for cosmological applications.

Recently, a systematic analytical study of the system of chiral MHD equations, including the back-reaction of the magnetic field on the chiral chemical potential, and the coupling to the plasma velocity field has been performed by Rogachevskii *et al.* (2017). High-resolution numerical simulations, presented in Schober *et al.* (2017), confirm results from mean-field theory, in particular the existence of a new chiral α effect that is not related to the kinetic helicity, the so-called α_μ effect. Spectral properties of chiral MHD turbulence have been analysed in Brandenburg *et al.* (2017b). A key result from these direct numerical simulations (DNS) is that turbulence can be magnetically driven by the Lorentz force due to a small-scale chiral dynamo instability. In particular, a new three-stage-scenario of the magnetic field evolution has been found in Schober *et al.* (2017). The small-scale chiral dynamo instability is followed by a phase in which magnetically produced turbulence triggers a large-scale dynamo instability, which eventually saturates due to the decrease of the chiral chemical potential.

In this paper, we extend the work of Schober *et al.* (2017) to analyse the energetics of chiral magnetically driven turbulence. We explore different initial values of the chiral chemical potential to find the dependence of the ratio of the kinetic energy over the magnetic energy on the initial chiral asymmetry and the magnetic Prandtl number, $\text{Pr}_M \equiv \nu/\eta$, where ν is

the kinematic viscosity and η is the magnetic diffusivity. We also determine energy transfer rates between the different energy reservoirs and obtain the dependence of the ratio of kinetic to magnetic energy dissipation rates on the magnetic Prandtl number.

The paper is structured as follows: In section 2, we outline the chiral MHD equations, the growth rates of their instabilities, and the saturation magnetic fields expected from the conservation law in chiral MHD. In this section, we also discuss the different stages of magnetic field evolution and the production of chiral magnetically driven turbulence. The setup of our numerical simulations is described in section 3 and compared with those presented in Schober *et al.* (2017). We discuss here also the results of the direct numerical simulations related to the dynamics of the velocity and magnetic fields. In section 3.3, we analyse the ratio of kinetic over magnetic energy for different dynamo growth rates and different magnetic Prandtl numbers. Additionally, the transfer of energy from the chiral chemical potential, via magnetic energy, to turbulent kinetic energy is studied by determining the energy production and dissipation rates. In section 4, we estimate the magnetic Prandtl and Reynolds numbers in the relativistic plasma of the early Universe and apply our results on the magnetic Prandtl number dependence.

2. Chiral MHD

2.1. Governing equations

We begin by reviewing the basic equations of chiral MHD, as derived by Rogachevskii *et al.* (2017). We consider the case of very low microscopic magnetic diffusivity, η , which is the relevant regime for astrophysical applications. The chiral asymmetry is described by the chiral chemical potential,

$$\mu_5 = 6(n_L - n_R) \frac{(\hbar c)^3}{(k_B T)^2}, \quad (1)$$

which is proportional to the difference in the number densities of left- and right-chiral fermions, n_L and n_R , respectively. Here, T is the temperature, k_B is the Boltzmann constant, c is the speed of light, and \hbar is the reduced Planck constant. In an external magnetic field, μ_5 gives rise to a current due to the chiral magnetic effect (CME)

$$\mathbf{J}_{\text{CME}} = \frac{\alpha_{\text{em}}}{\pi \hbar} \mu_5 \mathbf{B}, \quad (2)$$

where $\alpha_{\text{em}} \approx 1/137$ is the fine structure constant. This quantum relativistic effect, described by the standard model of particle physics, results in an additional term in the Maxwell equations. Based on these modified Maxwell equations, Boyarsky *et al.* (2015) and Rogachevskii *et al.* (2017) derived the following set of chiral MHD equations:

$$\frac{\partial \mathbf{B}}{\partial t} = \nabla \times [\mathbf{U} \times \mathbf{B} - \eta (\nabla \times \mathbf{B} - \mu \mathbf{B})], \quad (3)$$

$$\rho \frac{D\mathbf{U}}{Dt} = (\nabla \times \mathbf{B}) \times \mathbf{B} - \nabla p + \nabla \cdot (2\nu\rho\mathbf{S}), \quad (4)$$

$$\frac{D\rho}{Dt} = -\rho \nabla \cdot \mathbf{U}, \quad (5)$$

$$\frac{D\mu}{Dt} = D_5 \Delta\mu + \lambda \eta [\mathbf{B} \cdot (\nabla \times \mathbf{B}) - \mu \mathbf{B}^2], \quad (6)$$

where \mathbf{U} is the fluid velocity, the magnetic field \mathbf{B} is normalised such that the magnetic energy density is $\mathbf{B}^2/2$ (so the magnetic field in Gauss is $\sqrt{4\pi} \mathbf{B}$), and $D/Dt = \partial/\partial t + \mathbf{U} \cdot \nabla$ is the advective derivative. Further, a normalisation of μ_5 is used such that $\mu = (4\alpha_{\text{em}}/\hbar c)\mu_5$ and the chiral feedback parameter λ has been introduced, which characterises the strength of the back-reaction from the electromagnetic field on the evolution of μ . For hot plasmas, when $k_B T \gg \max(|\mu_L|, |\mu_R|)$, it is given by Boyarsky *et al.* (2015)

$$\lambda = 3\hbar c \left(\frac{8\alpha_{\text{em}}}{k_B T} \right)^2. \quad (7)$$

In equations (3)–(6), D_5 is a chiral diffusion coefficient, p is the fluid pressure, $S_{ij} = \frac{1}{2}(U_{i,j} + U_{j,i}) - \frac{1}{3}\delta_{ij}\nabla \cdot \mathbf{U}$ are the components of the trace-free strain tensor, where commas denote partial spatial differentiation. For an isothermal equation of state, the pressure p is related to the fluid density ρ via $p = c_s^2 \rho$, where c_s is the isothermal sound speed. Flipping reactions between right- and left-handed states of fermions have been neglected in equations (3)–(6). For an overview of the parameters and characteristic scales governing chiral MHD, we refer to table 1.

The system of equations is determined by several non-dimensional parameters. In terms of chiral MHD dynamos, the most relevant ones are the chiral Mach number

$$\text{Ma}_\mu = \frac{\eta\mu_0}{c_s} \equiv \frac{v_\mu}{c_s}, \quad (8)$$

where μ_0 is the initial value of μ , and the dimensionless chiral nonlinearity parameter:

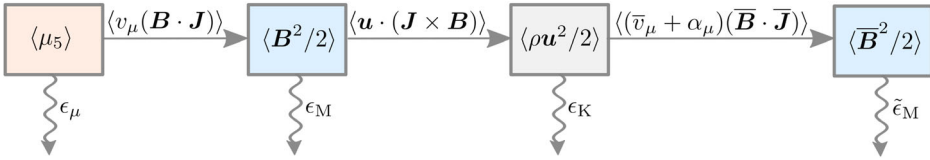
$$\lambda_\mu = \lambda\eta^2\bar{\rho}. \quad (9)$$

The parameter Ma_μ measures the relevance of the chiral term in the induction equation (3) and determines the growth rate of the small-scale chiral dynamo instability. The nonlinear back-reaction of the magnetic field on the chiral chemical potential μ is characterised by λ_μ , which affects the strength of the saturation magnetic field and the strength of the magnetically driven turbulence. In this paper, we consider only cases with $\lambda_\mu \ll 1$, i.e. when turbulence is produced efficiently due to strong magnetic fields generated by the small-scale chiral dynamo instability. The turbulent cascade properties have previously been studied by Brandenburg *et al.* (2017b) in the range $2 \times 10^{-6} \leq \lambda_\mu \leq 200$, Schober *et al.* (2017) in the range $10^{-9} \leq \lambda_\mu \leq 10^{-5}$.

The illustration in figure 1 shows how energy is converted from a chiral chemical potential, to magnetic energy, further to turbulent kinetic energy, and finally to energy of the large-scale magnetic field. The relevant transport terms are indicated in the sketch together with the diffusion terms, $\epsilon_\mu \equiv \langle D_5 \nabla^2 \mu \rangle$, $\epsilon_M \equiv \langle \eta \mathbf{J}^2 \rangle$, $\epsilon_K \equiv \langle 2\nu\rho \mathbf{S}^2 \rangle$, and $\tilde{\epsilon}_M \equiv \langle (\eta + \eta_T) \bar{\mathbf{J}}^2 \rangle$. Here, \mathbf{J} and $\bar{\mathbf{J}}$ are the total and mean values of the electric current, respectively, and η_T is the turbulent magnetic diffusivity. The latter is defined as $\eta_T = u_{\text{rms}}/(3k_f)$, where u_{rms} is the rms velocity and k_f integral length scale of turbulence.

Table 1. Overview of the parameters in chiral MHD. Units are given in CGS with the corresponding Natural Unit in brackets.

Parameter	Symbol	Unit	Definition
<i>Chiral MHD parameters</i>			
Chiral chemical potential	μ_5	erg [eV]	$6(n_L - n_R)(\hbar c)^3 / (k_B T)^2$
Normalised chiral chemical potential	μ	cm^{-1} [eV]	$4\alpha_{\text{em}} / (\hbar c) \mu_5$
Initial value of μ	μ_0	cm^{-1} [eV]	
Chiral velocity	v_μ	cm s^{-1} [-]	$\eta \mu_0$
Chiral Mach number	Ma_μ	-	v_μ / c_s
Chiral nonlinearity parameter	λ	$\text{s}^2 \text{g}^{-1} \text{cm}^{-1}$ [eV^{-2}]	$3\hbar c (8\alpha_{\text{em}} / (k_B T))^2$
Non-dimensional chiral nonlinearity parameter	λ_μ	-	$\lambda \eta^2 \bar{\rho}$
Chiral diffusivity	D_5	$\text{cm}^2 \text{s}^{-1}$ [eV^{-1}]	
Chiral diffusion rate	ϵ_μ	erg s^{-1} [eV^2]	$\langle D_5 \nabla^2 \mu \rangle$
<i>Classical MHD parameters</i>			
Magnetic diffusivity	η	$\text{cm}^2 \text{s}^{-1}$ [eV^{-1}]	
Kinematic viscosity	ν	$\text{cm}^2 \text{s}^{-1}$ [eV^{-1}]	
Turbulent diffusivity	η_T	$\text{cm}^2 \text{s}^{-1}$ [eV^{-1}]	$\approx u_{\text{rms}} / (3k_f)$
Kinetic energy dissipation rate	ϵ_K	erg s^{-1} [eV^2]	$\langle 2\nu \rho \mathbf{S}^2 \rangle$
Magnetic energy diffusion rate	ϵ_M	erg s^{-1} [eV^2]	$\langle \eta \mathbf{J}^2 \rangle$
Magnetic energy diffusion rate of mean magnetic field	$\tilde{\epsilon}_M$	erg s^{-1} [eV^2]	$\langle (\eta + \eta_T) \bar{\mathbf{J}}^2 \rangle$
<i>Characteristic wavenumbers</i>			
Small-scale chiral instability	k_μ	cm^{-1} [eV]	$\mu_0 / 2$
α_μ instability	k_α	cm^{-1} [eV]	$ \bar{v}_\mu + \alpha_\mu / (2\eta + 2\eta_T)$
Saturation	k_λ	cm^{-1} [eV]	$\sqrt{\bar{\rho} \lambda} C_\mu / C_\lambda \eta \mu_0$
Box size	k_1	cm^{-1} [eV]	$1/L$
<i>Characteristic growth rates</i>			
Small-scale chiral instability	γ_μ	s^{-1} [eV]	$\eta \mu_0^2 / 4$
α_μ instability	γ_α	s^{-1} [eV]	$(\bar{v}_\mu + \alpha_\mu)^2 / (4(\eta + \eta_T))$
<i>Characteristic field strengths</i>			
Initial value	B_0	G [eV^2]	
Transition: laminar to turbulent	$B_{\text{rms}}^{1 \rightarrow 2}$	G [eV^2]	$\approx (C_\mu \bar{\rho})^{1/2} \mu_0 \eta$
Dynamo saturation	B_{sat}	G [eV^2]	$\approx (\bar{\rho} \eta^2 C_\mu C_\lambda / \lambda)^{1/4} \mu_0$
<i>Dimension less parameters</i>			
Energy ratio	Υ	-	$\rho u_{\text{rms}}^2 / B_{\text{rms}}^2$
Ratio of production rates	Φ	-	$\langle \mathbf{U} \cdot (\mathbf{J} \times \mathbf{B}) \rangle / \langle \nu_\mu \mathbf{B} \cdot \mathbf{J} \rangle$


Figure 1. Illustration of energy transfer from the chiral chemical potential $\langle \mu_5 \rangle$, to magnetic energy $\langle \mathbf{B}^2/2 \rangle$, further to turbulent kinetic energy, $\langle \rho \mathbf{u}^2/2 \rangle$ and finally to energy of the large-scale magnetic field, $\langle \bar{\mathbf{B}}^2/2 \rangle$. Losses via microscopic magnetic diffusion and kinematic viscosity are indicated by curled arrows (colour online).

2.2. Analogy with the α effect in mean-field MHD

Readers familiar with mean-field MHD (see Moffatt 1978, Krause and Rädler 1980, mfMHD) will have readily noticed the analogy between $v_\mu = \mu \eta$ in chiral MHD and the kinetic part of the α effect, α_K , in mfMHD. For $\eta \rightarrow 0$, the analogy goes further in that even the evolution equation (6) for μ corresponds to an analogous one for the magnetic part of the α effect, α_M , proportional to the magnetic helicity, in what is known as the dynamical quenching formalism (Kleeorin and Ruzmaikin 1982, Kleeorin *et al.* 1995).

Exploiting the analogy between chiral MHD and dynamical quenching can be beneficial in two ways. First, there is a considerable body of work on dynamical quenching that can improve our intuition in chiral MHD (e.g. Kleorin *et al.* 2000, Blackman and Brandenburg 2002). Second, numerical approaches have been developed for dynamical quenching that can directly be utilised in chiral MHD. The purpose of this section is to elaborate on this analogy, which was never mentioned before. Readers unfamiliar with dynamical quenching may skip forward to section 2.3.

In chiral MHD, dynamical quenching means that the total chirality, i.e. the sum of magnetic helicity and fermion chirality, is conserved. In mfMHD, in the absence of magnetic helicity fluxes, it implies that the total magnetic helicity is conserved, i.e. the sum of the magnetic helicity of the mean-field and that of the fluctuating field, the latter of which constitutes an additional time-dependent contribution to the α effect. The other contribution to the α effect in mfMHD, α_K , is proportional to the kinetic helicity, which was here assumed to be constant in time, so we can write (see equation 18 of Blackman and Brandenburg 2002)

$$\frac{\partial \alpha}{\partial t} = \lambda_{\text{mfMHD}} \eta \left[\eta_T \bar{\mathbf{B}} \cdot (\nabla \times \bar{\mathbf{B}}) - \alpha \bar{\mathbf{B}}^2 \right] - \Gamma_{\text{mfMHD}} (\alpha - \alpha_K), \quad (10)$$

where $\alpha = \alpha_K + \alpha_M$. In mfMHD, the coupling coefficient is given by $\lambda_{\text{mfMHD}} = 2\eta_T k_f^2 / (\eta B_{\text{eq}}^2)$ and $\Gamma_{\text{mfMHD}} = 2\eta k_f^2$, where k_f is the wavenumber of the energy-carrying eddies and B_{eq} is the equipartition field strength.

The applications of chiral MHD carry over to decaying MHD turbulence with finite initial large-scale or small-scale magnetic helicity (Kemel *et al.* 2011). During the decay, some of the magnetic helicity is transferred between the large- and small-scale fields, which leads to a change in the α effect that in turn results in a slow-down of the decay.

2.3. Review of the three stages of the magnetic field evolution

Recent simulations by Schober *et al.* (2017) have demonstrated the existence of three distinct stages characterising the growth and saturation of the magnetic field in different kinds of chiral dynamos:

Phase 1: a laminar phase of small-scale chiral dynamo instability;

Phase 2: a large-scale dynamo instability, caused by chiral magnetically produced turbulence;

Phase 3: termination of growth of the large-scale magnetic field and reduction of μ according to the conservation law in chiral MHD. With no further energy input, dynamo saturation is followed by decaying helical MHD turbulence, where the magnetic field decreases with time as a power law like $|\mathbf{B}| \sim t^{-1/3}$ (Biskamp and Müller 1999, Kahniashvili *et al.* 2013).

In this section, the dynamics of chiral magnetically driven turbulence is shortly reviewed for the case of a chiral plasma in an infinite domain (see figure 2). In section 2.4, we will discuss the potential discrepancies in this picture arising from the effect of a finite computational domain (see figure 3).

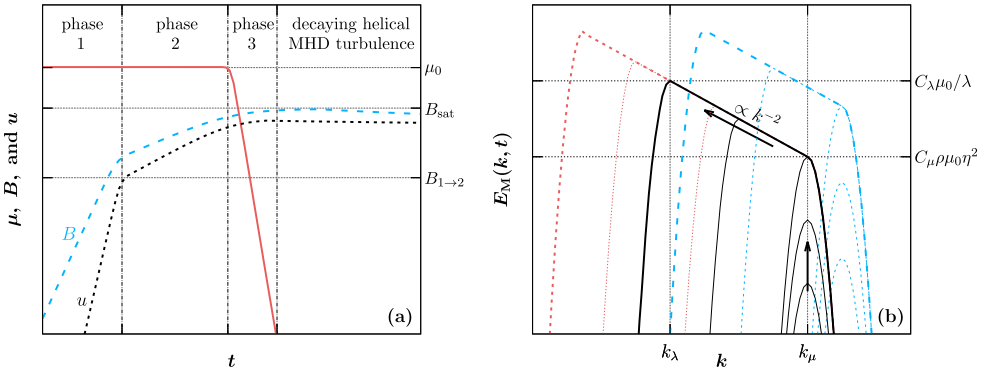


Figure 2. Schematic overview of the evolution of a plasma in an infinite box with an initially weak magnetic field in the presence of a chiral chemical potential. For a detailed discussion see section 2.3. (a) The time evolution of μ (red solid line), u (black dotted line), and B (blue dashed line). The values of μ_0 and B_{sat} are indicated as horizontal dotted lines. The transitions between individual phases of the evolution are marked by vertical dashed-dotted lines. (b) Evolution of magnetic energy spectra with inverse transfer from k_μ to k_λ . The blue lines correspond to a larger μ_0 in comparison with the case shown by the black lines (but for the same λ), while the red lines correspond to a smaller λ in comparison with the case indicated by the black lines (but for the same μ_0) (colour online).

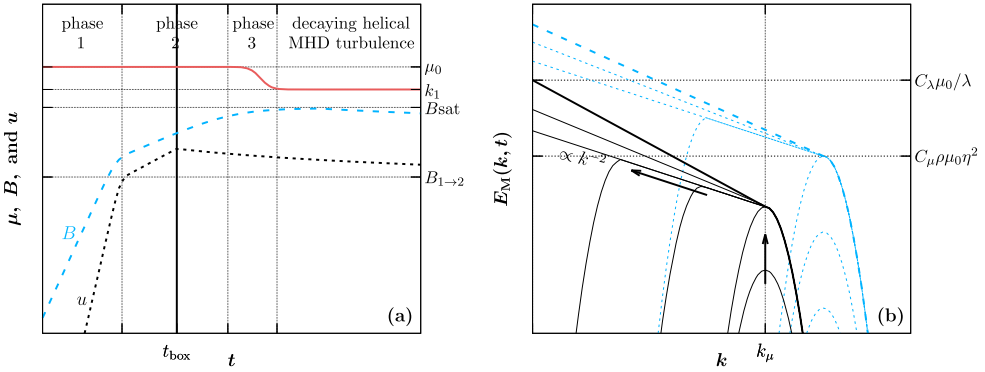


Figure 3. Same as figure 2 but including effects of a finite box (colour online).

2.3.1. Amplification of magnetic fields by chiral dynamo

In *phase 1*, the velocity field is negligible and a small-scale laminar dynamo operates. The growth rate found from the linearised equation (3) has a maximum value of (Joyce and Shaposhnikov 1997)

$$\gamma_\mu = \frac{v_\mu^2}{4\eta} \quad (11)$$

being attained at

$$k_\mu = \frac{|\mu_0|}{2}. \quad (12)$$

While the magnetic field grows with a rate γ_μ , turbulence is driven by the Lorentz force with the rms velocity increasing at a rate of approximately $2\gamma_\mu$.

In *phase 2*, the turbulent velocity has become so large that it affects the evolution of the magnetic field. It has been shown by Brandenburg *et al.* (2017b) that the peak of the magnetic energy spectrum reaches a value of

$$E_M^{1 \rightarrow 2} = C_\mu \bar{\rho} \mu_0 \eta^2 \quad (13)$$

with $C_\mu \approx 16$ at the transition from phase 1 to phase 2. This moment coincides with the beginning of the inverse transfer, when the k^{-2} spectrum starts to build up, i.e. when the peak of the magnetic energy spectrum moves from k_μ to smaller wavenumbers. The corresponding transition field strength can be estimated as

$$B_{\text{rms}}^{1 \rightarrow 2} \approx (E_M^{1 \rightarrow 2} k_\mu)^{1/2} \approx \left(\frac{C_\mu \bar{\rho}}{2} \right)^{1/2} \mu_0 \eta. \quad (14)$$

At this stage, the chiral magnetically produced turbulence causes excitation of a large-scale magnetic field by the chiral α_μ effect. This chiral large-scale dynamo, studied by Rogachevskii *et al.* (2017), occurs at the maximum growth rate

$$\gamma_\alpha = \frac{(\bar{v}_\mu + \alpha_\mu)^2}{4(\eta + \eta_T)} = \frac{(\bar{v}_\mu + \alpha_\mu)^2}{4\eta(1 + \text{Re}_M/3)}, \quad (15)$$

where $\bar{v}_\mu = \eta \bar{\mu}$ and $\bar{\mu}$ is the mean chiral chemical potential. Despite the contribution from the chiral α_μ effect, given by the term $\alpha_\mu = -\frac{2}{3} \bar{v}_\mu \ln \text{Re}_M$, the overall growth rate is reduced as compared to the laminar chiral dynamo. Here, Re_M is the magnetic Reynolds number defined by $\text{Re}_M = u_{\text{rms}}/(\eta k_f) = 3\eta_T/\eta$. The maximum growth rate of the chiral large-scale dynamo is attained at the wavenumber $k_\alpha = |\bar{v}_\mu + \alpha_\mu|/(2\eta + 2\eta_T)$.

2.3.2. Saturation of the chiral large-scale dynamo

Saturation of the chiral large-scale dynamo, *phase 3*, is controlled by the conservation law following from equations (3)–(6), which implies that the total chirality

$$\frac{\lambda}{2} \overline{\mathbf{A} \cdot \mathbf{B}} + \bar{\mu} = \mu_0 = \text{const}, \quad (16)$$

is a conserved quantity; see Rogachevskii *et al.* (2017) for more details. Here, $\overline{\mathbf{A} \cdot \mathbf{B}}$ is the spatially averaged value of the magnetic helicity. According to the conservation law (16), the magnetic field reaches $B_{\text{sat}} = (\mu_0/(\lambda \xi_M))^{1/2}$, where ξ_M is the correlation length of the magnetic field.

The magnetic energy spectrum $E_M(k, t)$ in chiral MHD turbulence has been studied in Brandenburg *et al.* (2017b). In particular, it was found that E_M is proportional to k^{-2} between the wavenumber

$$k_\lambda = \sqrt{\bar{\rho} \lambda \frac{C_\mu}{C_\lambda} \eta \mu_0}, \quad (17)$$

with $C_\mu \approx 16$, $C_\lambda \approx 1$, and k_μ given by equation (12). We note that the only case considered here is $\lambda \mu \ll 1$, which implies $k_\lambda \ll k_\mu$. Using dimensional arguments and numerical simulations, Brandenburg *et al.* (2017b) found that for chiral magnetically driven

turbulence, the saturation magnetic energy spectrum $E_M(k, t)$ obeys

$$E_M(k, t) = C_\mu \bar{\rho} \mu_0^3 \eta^2 k^{-2} \quad (18)$$

in $k_\lambda < k < \mu_0$. Here, $E_M(k, t)$ is normalised such that the mean magnetic energy density is $\langle \mathbf{B}^2 \rangle / 2 = \int E_M(k) dk$. It was also confirmed numerically by Brandenburg *et al.* (2017b) that the magnetic energy spectrum $E_M(k)$ is limited from above by $C_\lambda \mu_0 / \lambda$. The magnetic field strength at dynamo saturation can be estimated as

$$B_{\text{sat}} \approx (E_M(k_\lambda) k_\lambda)^{1/2} = \left(\frac{\bar{\rho} \eta^2 C_\mu C_\lambda}{\lambda} \right)^{1/4} \mu_0. \quad (19)$$

In figure 2(a), the effect of changing μ_0 and λ on the final energy spectrum is illustrated. Here, intermediate spectra are shown as thin lines, while thick lines indicate the magnetic energy spectrum at saturation with an inertial range where $E_M \propto k^{-2}$ between k_λ and k_μ . The black lines present a case with a certain μ_{black} and λ_{black} . If λ is decreased, k_λ also decreases, and the k^{-2} spectrum spans over a larger range of wavenumbers. This is illustrated by the red lines, where $\mu_{\text{red}} = \mu_{\text{black}}$ and $\lambda_{\text{red}} < \lambda_{\text{black}}$. In this case, the final magnetic field strength is higher than in the case with μ_{black} and λ_{black} . The same final field strength can, however, also be reached by increasing μ_0 , as $B_{\text{sat}} \propto \mu_0 / \lambda^{1/4}$. Schematic spectra illustrating the latter case are shown as blue curves in figure 2, where $\mu_{\text{blue}} > \mu_{\text{black}}$ and $\lambda_{\text{blue}} = \lambda_{\text{black}}$.

2.4. Effects of the finite numerical domain

Due to a finite simulation domain, the evolution of the magnetic field and the turbulent velocity is slightly modified in comparison to the case discussed in section 2.3. The evolution of the chiral chemical potential, the magnetic field strength, the rms velocity, and the time evolution of the magnetic energy spectra in finite box simulations are illustrated in figure 3.

First of all, the chiral chemical potential, does not vanish at dynamo saturation, but reaches a finite value, which is equal to the minimum wavenumber possible in the box, k_1 . The magnetic field reaches the saturation value given by equation (19). However, the evolution of the magnetic energy spectrum differs compared to that anticipated for an infinite system. In the laminar chiral dynamo phase, we expect an instability at wavenumber k_μ , as predicted by theory; see the black curves in figure 3(b). With the production of turbulence, the peak of the magnetic energy spectrum moves to larger spatial scales through inverse transfer. As discussed above, we expect a scaling of the magnetic energy spectrum proportional to k^{-2} ; see equation (18). Once the peak reaches the size of the box, however, we observe a steepening of the spectrum, as indicated in the schematic figure 3, if $k_\lambda < k_1$. This steepening is caused by the growth of the magnetic field on the smallest possible wavenumber, until the spectrum reaches its saturation value $C_\lambda \mu_0 / \lambda$. For large values of μ_0 , the initial chiral dynamo instability occurs at smaller spatial scales, i.e. at larger wavenumbers k , and thus the k^{-2} spectrum can extend over a larger range; see the blue curves in figure 3(b). In this paper, we present also a run with $k_\lambda \approx k_1$, run B, which has a resolution of 1216^3 . Large parameter scans, and cases with larger scale separation, $k_\lambda \gg k_1$, are computationally too expensive.

3. Chiral magnetically driven turbulence in direct numerical simulations

3.1. Numerical setup

We solve equations (3)–(6) in a three-dimensional periodic domain of size $L^3 = (2\pi)^3$ with the PENCIL CODE.¹ This code is well suited for MHD studies; it employs a third-order accurate time-stepping method of Williamson (1980) and sixth-order explicit finite differences in space (Brandenburg and Dobler 2002, Brandenburg 2003). The smallest wavenumber covered in the numerical domain is $k_1 = 2\pi/L = 1$ and the resolution is varied between 480^3 and 1216^3 . For comparison, we also show some simulations that have previously been presented (Schober *et al.* 2017), but we now include additional runs for $\text{Pr}_M \neq 1$. The sound speed in the simulations is set to $c_s = 1$ and the mean fluid density to $\bar{\rho} = 1$. If not indicated otherwise, the magnetic Prandtl number is 1, i.e. the magnetic diffusivity equals the viscosity. However, we do consider cases between $\text{Pr}_M = 0.5$ and $\text{Pr}_M = 10$, where the value of η is fixed and ν changes. No external forcing is applied to drive turbulence in these simulations, i.e. the velocity field is then driven entirely by magnetic fields. All runs are initialised with a weak seed magnetic field in the form of Gaussian noise, with constant μ , and vanishing velocity. The main input parameters of all simulations presented in this paper are summarised in table 2.

3.2. Reference run for chiral magnetically driven turbulence

The generation of the magnetic field by the laminar chiral dynamo, and after that by the chiral mean-field dynamo, can be seen in figure 4, where we present snapshots of μ (left column), B_x (middle column), and u_x (right column) for run A. As indicated on the left, from top to bottom the time increases from $t = 0$ to $t\gamma_\mu = 50$. In the following, we summarise the quantitative analysis of run A, but we refer to section 4 of Schober *et al.* (2017) for a more detailed discussion of this simulation.

The time evolution of the key quantities for the reference run A is shown in figure 5. As can be seen in figure 5(a), B_{rms} (blue dashed line) increases exponentially by over four orders of magnitude before the growth rate decreases due to the produced turbulence. Saturation of the magnetic field growth occurs at $t\gamma_\mu \approx 40$. Both, the velocity u_{rms} (black

Table 2. Overview of the input parameters of all simulations discussed in this paper. We list the values of the non-dimensional chiral parameters, Ma_μ and $\lambda_{\mu\prime}$, see equations (8) and (9), respectively, as well as the characteristic wavenumbers, k_μ and k_λ , see equations (12) and (17), normalised by the minimum wavenumber corresponding to the finite numerical domain, k_1 . Runs D, F, G and H have been performed with different magnetic Prandtl numbers, i.e. run D05 with $\text{Pr}_M = 0.5$, run D1 with $\text{Pr}_M = 1$, up to run D10 with $\text{Pr}_M = 10$. Reference runs are highlighted by bold font.

Simulation	Resolution	Ma_μ	$\lambda_{\mu\prime}$	$(\mu_0/\lambda)^{1/2}$	k_μ/k_1	k_λ/k_1	Pr_M
Run A	576³	2×10^{-3}	2×10^{-7}	1.00	10	0.036	1.0
Run B	1216 ³	6.6×10^{-3}	9×10^{-6}	0.12	44	1.1	1.0
Run C	480 ³	1.5×10^{-3}	5×10^{-6}	0.12	15	0.27	1.0
Runs D05 . . . 10	480³	2×10^{-3}	5×10^{-6}	0.14	20	0.36	0.5 . . . 10
Run E	480 ³	2.5×10^{-3}	5×10^{-6}	0.16	25	0.45	1.0
Runs F1 . . . 10	576 ³	3×10^{-3}	5×10^{-6}	0.17	30	0.54	0.5 . . . 10
Runs G05 . . . 10	480 ³	4×10^{-3}	2×10^{-5}	0.14	20	0.72	0.5 . . . 10
Runs H05 . . . 10	480 ³	8×10^{-3}	2×10^{-5}	0.28	20	0.72	0.5 . . . 10

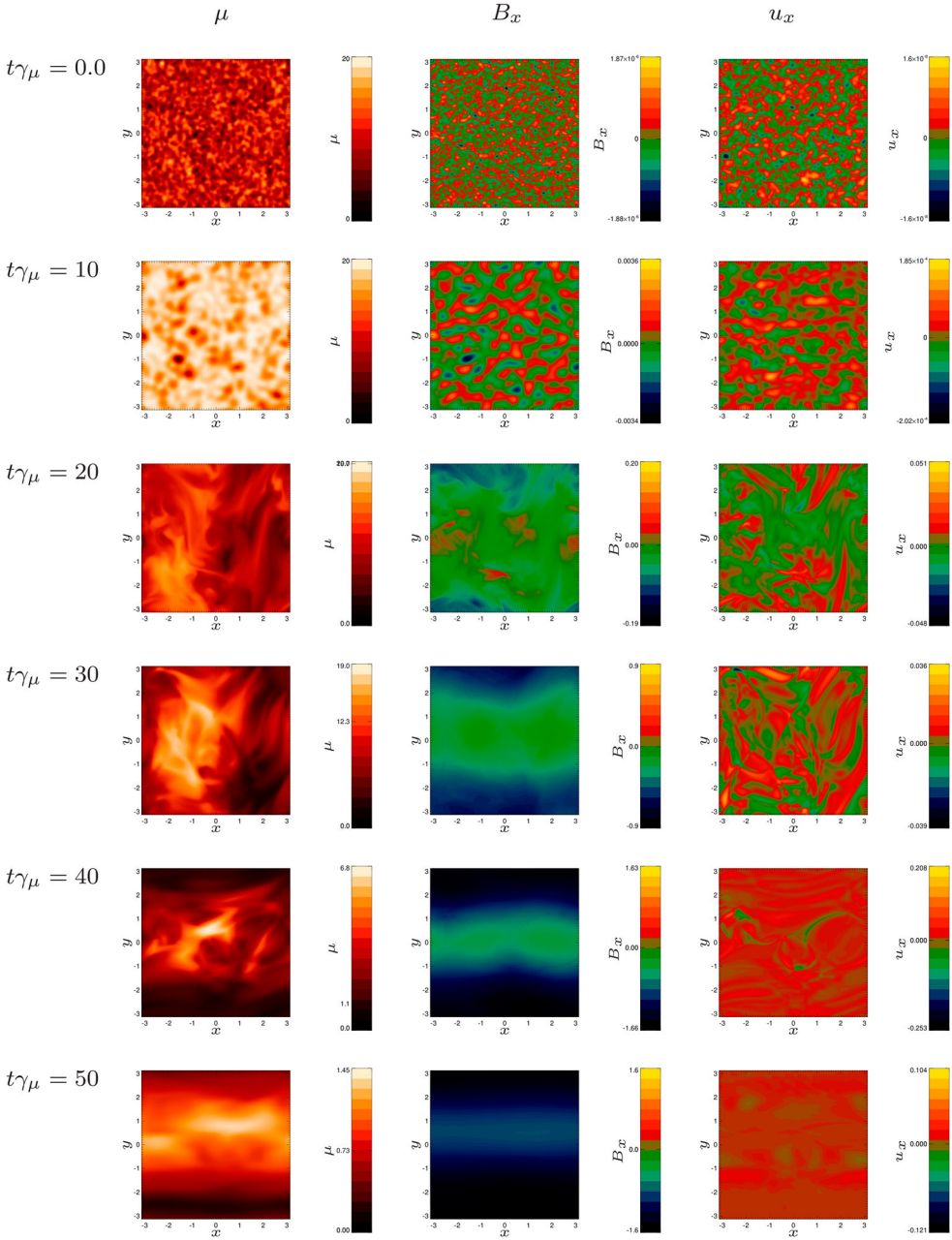


Figure 4. Cross sections of the chiral chemical potential (μ , left column), as well as the x components of the magnetic field (B_x , middle column), and the velocity field (u_x , right column) in the xy plane. From top to bottom the time increases from 0 to $50 \gamma_\mu^{-1}$, during which the chiral MHD dynamo generates a large-scale magnetic field and a velocity field.

dotted line) and the magnetic helicity $\overline{\mathbf{A} \cdot \mathbf{B}}$ (blue dotted line) increase at a rate twice the one of B_{rms} . The value of μ_{rms} (orange solid line), here shown with a constant factor $2/\lambda$, decreases only above $t\gamma_\mu \approx 30$, switching off the chiral dynamo instability. In accordance

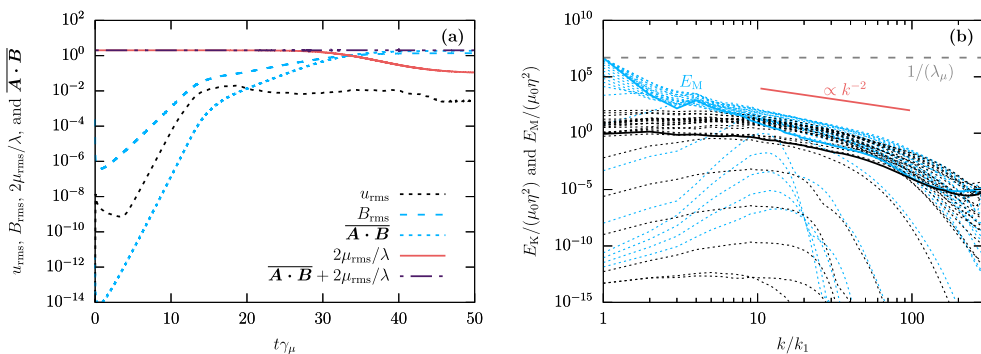


Figure 5. (a) The time evolution of the most relevant parameters in the reference run A. This run has been discussed in greater detail in section 4 of Schober *et al.* (2017), where this plot is shown in the top panel of their figure 9. (b) Normalised energy and helicity spectra for the reference run A. The time intervals between two spectra are equidistant and the last spectra are presented by solid lines. This plot is equivalent to figure 10 of Schober *et al.* (2017) (colour online).

with the conservation law (16), the sum $\overline{\mathbf{A} \cdot \mathbf{B}} + 2\mu_{\text{rms}}/\lambda$ (purple dashed-dotted line) is constant throughout the simulation time.

In figure 5(b), the evolution of the magnetic (blue lines) and kinetic (black lines) energy spectra for run A are presented. It can be seen that the laminar chiral dynamo injects energy at the wavenumber k_μ , as given in equation (12). Once turbulence has been produced, the magnetic correlation length moves to smaller wavenumbers due to mode coupling, similarly to what has been seen previously in dynamos driven by the Bell instability (Rogachevskii *et al.* 2012). Eventually, the energy accumulates on $k = k_1$; see the final spectra in the simulation which are plotted with solid lines.

3.3. Turbulence in different scenarios

In chiral MHD, energy is transformed from the chiral chemical potential, to magnetic energy, and later to turbulent kinetic energy; see figure 1. For a quantification of this energy transfer, it is useful to compare the production rate of turbulent kinetic energy, $\langle \mathbf{U} \cdot (\mathbf{J} \times \mathbf{B}) \rangle$, with the one of the magnetic field, $|v_\mu \mathbf{B} \cdot \nabla \times \mathbf{B}|$. Therefore, we define the dimensionless ratio

$$\Phi \equiv \frac{\langle \mathbf{U} \cdot (\mathbf{J} \times \mathbf{B}) \rangle}{|v_\mu \mathbf{B} \cdot \nabla \times \mathbf{B}|}, \quad (20)$$

where we have assumed that $\mathbf{B} \cdot \nabla \times \mathbf{B} \approx k_M B_{\text{rms}}^2$ with the inverse magnetic correlation length, k_M^{-1} .

Furthermore, it is useful to determine the value of turbulent kinetic energy that can be produced in chiral MHD without external forcing of turbulence. In the analysis of run A, we have seen that the kinetic energy reaches a certain percentage of the magnetic energy. With the onset of the large-scale dynamo phase, phase 2, the ratio

$$\gamma \equiv \frac{\rho u_{\text{rms}}^2/2}{B_{\text{rms}}^2/2} \quad (21)$$

stays approximately constant and decreases as soon as the peak of the magnetic energy spectrum reaches the box wavenumber k_1 . Afterwards, turbulence is not driven by the Lorentz force anymore and the velocity field decays.

In this section, we explore how the details of this scenario are affected by the properties of the plasma. In particular, we perform a parameter scan, varying the chiral parameters as well as the magnetic Prandtl number.

3.3.1. Dependence on the chiral parameters Ma_μ and λ_μ

The time evolution of the ratio \mathcal{Y} is presented in figure 6(a) for runs with different values of Ma_μ and λ_μ . Time is normalised here by the inverse of the laminar dynamo growth rate (11), allowing comparison between runs with different v_μ . The evolution of \mathcal{Y} in all runs is similar up to $t \approx 12 \gamma_\mu^{-1}$, except for a minor time delay of run A. This can be explained by the effect of magnetic diffusivity which is larger than the one in run C by a factor of two. Phase 2, when turbulence affects the evolution of the magnetic field, begins approximately at $t \approx (12\text{--}14) \gamma_\mu^{-1}$ for the runs considered here. The onset of phase 2 is weakly dependent on η and, in principle, also on the initial value of the magnetic field strength, which is the same for all runs presented in this paper. During phase 2, the ratio \mathcal{Y} is comparable for all three runs considered here, even though Ma_μ and λ_μ are different. Once the chiral large-scale dynamo phase begins, we obtain the ratio $\mathcal{Y} \lesssim 0.1$.

Run A, the reference run discussed in the previous section, has the lowest value of λ in our sample, leading to a small value of k_λ in comparison to the maximum wavenumber in the box: $k_\lambda \approx 0.036k_1$. This implies that k_1 is reached early, much before dynamo saturation, and the kinetic energy decays. As long as $k_M > k_1$, a solid line style is used in figure 6, while for late times, the time evolution is presented with dashed lines to indicate the finite box effect. Here, k_M has been determined as the peak of the energy spectra. To

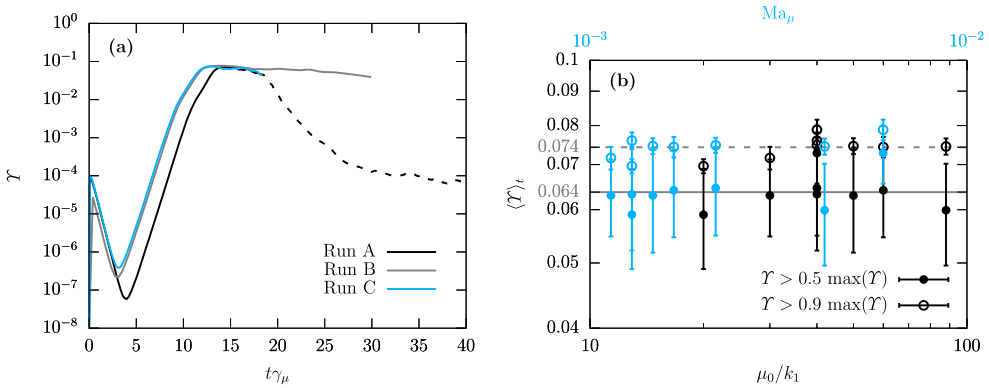


Figure 6. (a) The ratio of kinetic over magnetic energy, \mathcal{Y} , as a function of time, normalised by γ_μ^{-1} , for runs A–C; see table 2. The time during which k_M is inside the numerical box, i.e. $k_M > k_1$, is marked by solid line style. For $k_M < k_1$, the lines are dashed. (b) The time averaged ratio Φ as a function of μ_0/k_1 (lower abscissa, black symbols) and a function of Ma_μ (upper abscissa, blue symbols) for all runs with $\text{Pr}_M = 1$. For the results shown as filled dots, the average has been performed for the time interval for which \mathcal{Y} is at least 50% of its maximum value. For open dots, the time average is taken for all $\mathcal{Y} > 0.9 \max(\mathcal{Y})$. The solid grey line shows the mean value of $\langle \mathcal{Y} \rangle_t$ resulting from the first time averaging condition and the dashed grey for the latter condition (colour online).

observe a scenario in which the complete inverse cascade takes place inside the box, so that the kinetic energy does not decay within phase 2, we have performed run B. The choice of the parameters for this run, listed in table 2, can be justified as follows: As for all of the runs presented in this paper, the ratio between k_μ and k_λ needs to be large, in order to observe a chiral large-scale dynamo phase (phase 2). Using equations (12) and (17), we see that

$$\frac{k_\mu}{k_\lambda} = \left(\frac{C_\lambda}{4C_\mu} \frac{1}{\bar{\rho}\eta^2\lambda} \right)^{1/2} = \left(\frac{C_\lambda}{4C_\mu} \frac{1}{\lambda_\mu} \right)^{1/2}, \quad (22)$$

which is independent of μ_0 . However, μ_0 needs to be chosen high enough to ensure that $k_\lambda > k_1$. In run B, we use $\mu_0/k_1 = 88$, which implies that the laminar dynamo instability occurs on small spatial scales and a high numerical resolution is required. Run B is presented in figure 6(a) as a grey solid line, for which the ratio \mathcal{Y} remains approximately constant for times larger than $\approx 12 \gamma_\mu^{-1}$.

In figure 6(b), we show the time averaged ratio $\langle \mathcal{Y} \rangle_t$ for all our runs with $\text{Pr}_M = 1$ as a function of μ_0/k_1 as black symbols. The blue symbols refer to the upper x axes and indicate the corresponding value of Ma_μ . For the time averaging procedure, we consider two different criteria: For solid symbols the time average is performed for all values of \mathcal{Y} larger than 50% of its maximum value. The open dots are obtained by using all values for which $\mathcal{Y} > 0.9 \max(\mathcal{Y})$, which obviously results in a larger average value. Error bars represent the standard deviation of $\langle \mathcal{Y} \rangle_t$. There is no significant dependence of $\langle \mathcal{Y} \rangle_t$ on the values of μ_0 and Ma_μ for the parameter space explored here: When averaging over all $\mathcal{Y} > 0.5 \max(\mathcal{Y})$, we find a mean $\langle \mathcal{Y} \rangle_t \approx 0.064$, and when employing the criterion $\mathcal{Y} > 0.9 \max(\mathcal{Y})$, we find $\langle \mathcal{Y} \rangle_t \approx 0.074$.

To estimate the magnetic Reynolds number, we need to determine the amount of turbulent kinetic energy that can be produced by the Lorentz force. The value of Re_M is determined by the rms velocity, the magnetic diffusivity, and the correlation length of the magnetic field, k_M^{-1} . In numerical simulations, both u_{rms} and k_M can be limited by the size of the box, while η is an input parameter. We have seen that $\langle \mathcal{Y} \rangle_t$ has an approximately fixed value in the mean-field dynamo phase for $\text{Pr}_M = 1$ and as long as $k_M > k_1$. This implies that the value of u_{rms} is proportional to B_{rms} and reaches a maximum at the time t_{box} , which is defined as the time when the peak of the energy spectrum reaches the size of the box, i.e. when $k_M = k_1$. The energy spectrum at this time, described by equation (18), reaches a maximum $E_M(k_1, t_{\text{box}}) = C_\mu \bar{\rho} \eta^2 \mu_0^3 / 2$. The magnetic field strength corresponding to this energy spectrum can be estimated as $[E_M(k_1, t_{\text{box}}) k_1]^{1/2} = (C_\mu \bar{\rho} / 2)^{1/2} \eta \mu_0^{3/2}$. Hence we expect a scaling of the maximum velocity in our simulations $\propto \eta \mu_0^{3/2}$. The magnetic Reynolds number, $\text{Re}_M = u_{\text{rms}} / (\eta k_M)$ with $k_M = k_1$ at late times, is thus independent of η and scales as $\mu_0^{3/2}$. This scaling is observed in our simulations; see figure 7(b). The Reynolds number as a function of time for runs with different μ_0/k_1 is presented in figure 7(a). Here, we show two different ratios, $u_{\text{rms}} / (\eta k_M)$ and $u_{\text{rms}} / (\eta k_1)$. For the first case, k_M is measured as a function of time using the magnetic energy spectra. At late times, once the peak of the magnetic energy spectrum has reached the box wavenumber, $k_M = k_1$, and the dashed and solid curves for individual runs coincide.

The ratio of the production rate of kinetic energy over the production rate of magnetic energy, Φ , is presented in figure 8. For runs A, B, C, it can be seen how Φ increases exponentially with a rate $\approx 2\gamma_\mu$ like the velocity field. In phase 2, the growth rate decreases, and

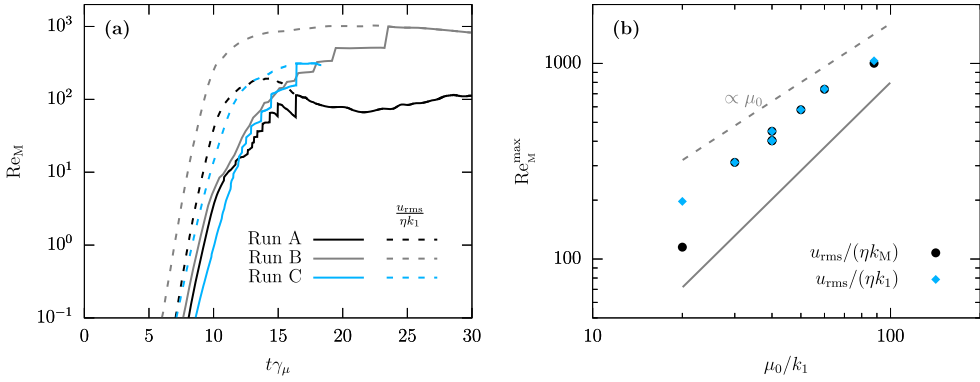


Figure 7. (a) The magnetic Reynolds number Re_M as a function of time for runs A–C. The solid lines indicate the result using k_M as the integral scale of turbulence and dashed lines show the result using k_1 . At late times $k_M = k_1$ in our DNS, which are confined within a finite box. (b) The maximum magnetic Reynolds number found in our simulations versus μ_0/k_1 , for both cases $Re_M = u_{rms}/(\eta k_1)$ (black dots) and $Re_M = u_{rms}/(\eta k_M)$ (blue diamonds). The solid line indicates the scaling $\mu_0^{3/2}$ which is expected for finite box simulations with $k_1 > k_\lambda$ (colour online).

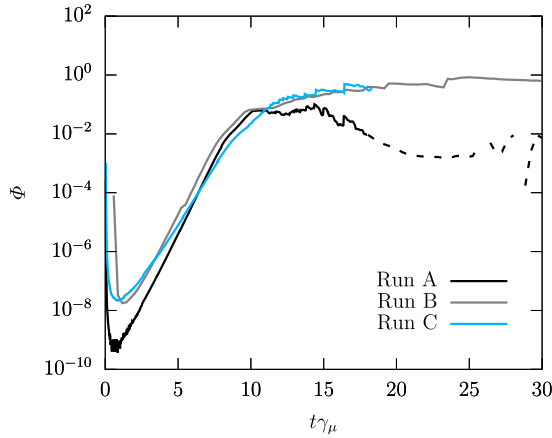


Figure 8. Same as figure 6(a), but for the ratio of the production rate of kinetic energy over the production rate of magnetic energy, Φ (colour online).

Φ seems to converge to a value of ≈ 1 at dynamo saturation, implying that the transfer rate from the chiral chemical potential to magnetic energy and the transfer rate from magnetic energy to kinetic energy become comparable. Again, run A differs from runs B and C, due to the fact that the magnetic correlation length reaches the size of the domain at $t\gamma_\mu \approx 17$, which is well before dynamo saturation. In order to perform a quantitative analysis of the dependence of Φ on the plasma parameters, it would be necessary to run the numerical simulations for a much longer time, i.e. until dynamo saturation, and to increase the size of the simulation domain to ensure $k_1 < k_M$. This is, however, too expensive and beyond the scope of this paper.

3.3.2. Dependence on the magnetic Prandtl number

We have performed a series of runs with different magnetic Prandtl numbers by changing the value of ν , in order to explore trends in the conversion of magnetic to kinetic energy. The time series of the most relevant quantities are discussed here exemplary for the runs of series D, where Pr_M varies between 0.5 and 10 while all other run parameters are unchanged; see table 2. It should be noted that low Pr_M are difficult to obtain in DNS at fixed η , as an increase of resolution is required when decreasing ν , making a quantitative study of the low Prandtl number regime inaccessible to our current simulations.

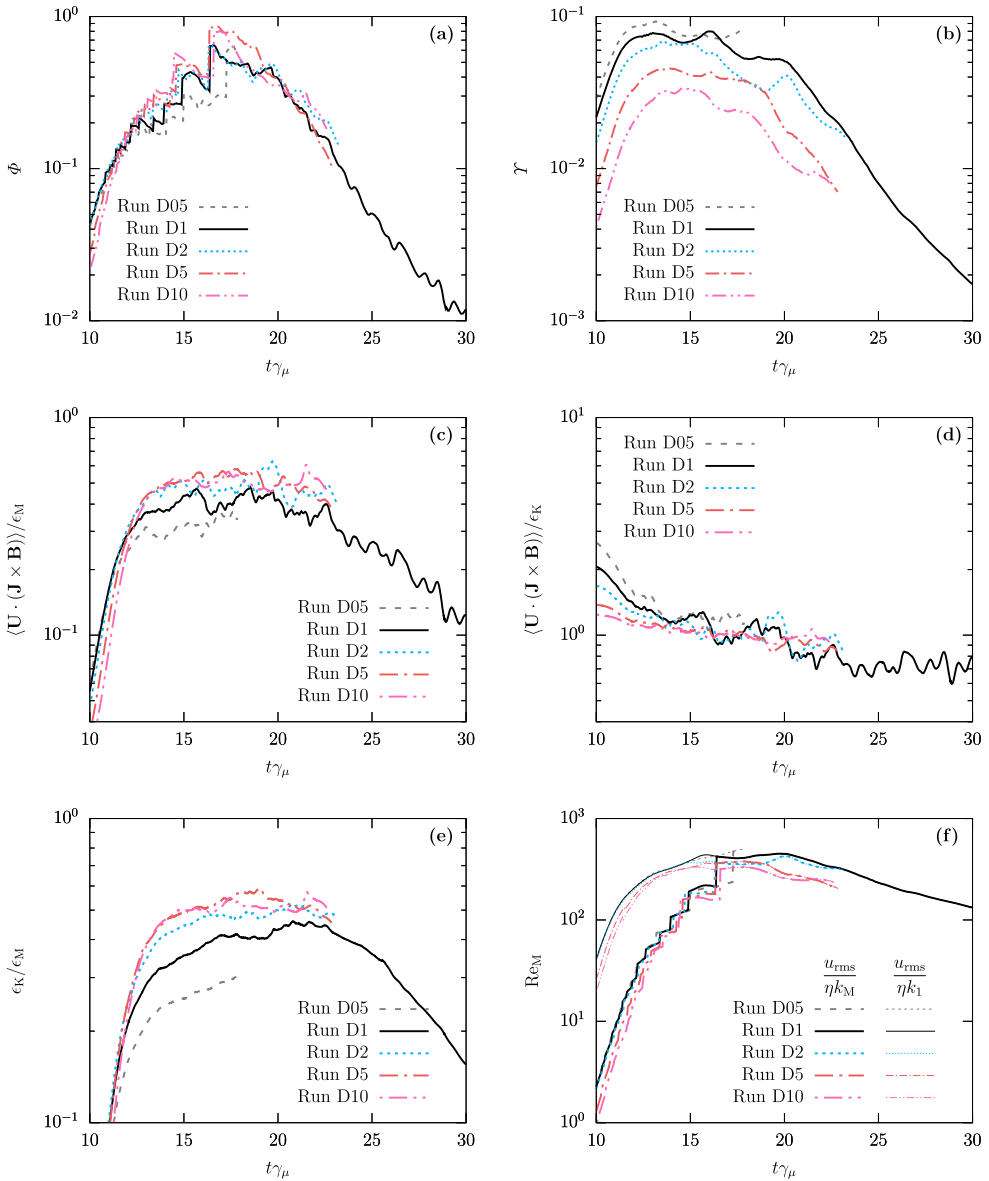


Figure 9. Time series of the ratio of (a) energy transfer rates Φ , (b) the energy ratio γ , (c) $\langle \mathbf{U} \cdot (\mathbf{J} \times \mathbf{B}) \rangle / \epsilon_M$, (d) $\langle \mathbf{U} \cdot (\mathbf{J} \times \mathbf{B}) \rangle / \epsilon_K$, (e) ϵ_K / ϵ_M , and (f) Re_M for series D; see table 2 (colour online).

In figure 9(a), Φ is presented as a function of time. It should be noted, that the magnetic correlation length reaches k_1^{-1} at a time of $t\gamma_\mu \approx 20$. Later times should not be discussed due to numerical artefacts discussed before. Up to $t\gamma_\mu \approx 20$, we do not observe a significant Pr_M -dependence of Φ . The ratio \mathcal{Y} , presented in figure 10(b), on the other hand decreases significantly with increasing Pr_M .

In the middle panels (c),(d) of figure 9, we present the time evolution of additional characteristics describing the transfer from kinetic to magnetic energy. We find that both, the work done by the Lorentz force, $\langle \mathbf{U} \cdot (\mathbf{J} \times \mathbf{B}) \rangle$, and the ratio of viscous over Joule dissipation, ϵ_K/ϵ_M depend on Pr_M . The latter dissipation ratio is expected to increase with Pr_M for large-scale and small-scale dynamos in classical MHD; see Brandenburg (2014). This trend of ϵ_K/ϵ_M with Pr_M is also observed in our DNS of chiral large-scale dynamos; see also figure 10(c). However, we do observe a power-law scaling of $\langle \epsilon_K/\epsilon_M \rangle_t$ with Pr_M only below $\text{Pr}_M \approx 2$. For larger Prandtl numbers the ratio becomes constant.

The maximum magnetic Reynolds numbers, Re_M^{\max} , obtained in series D, are presented figure 10(b). It can be seen that a dependence of Re_M^{\max} on Pr_M is caused by the decrease

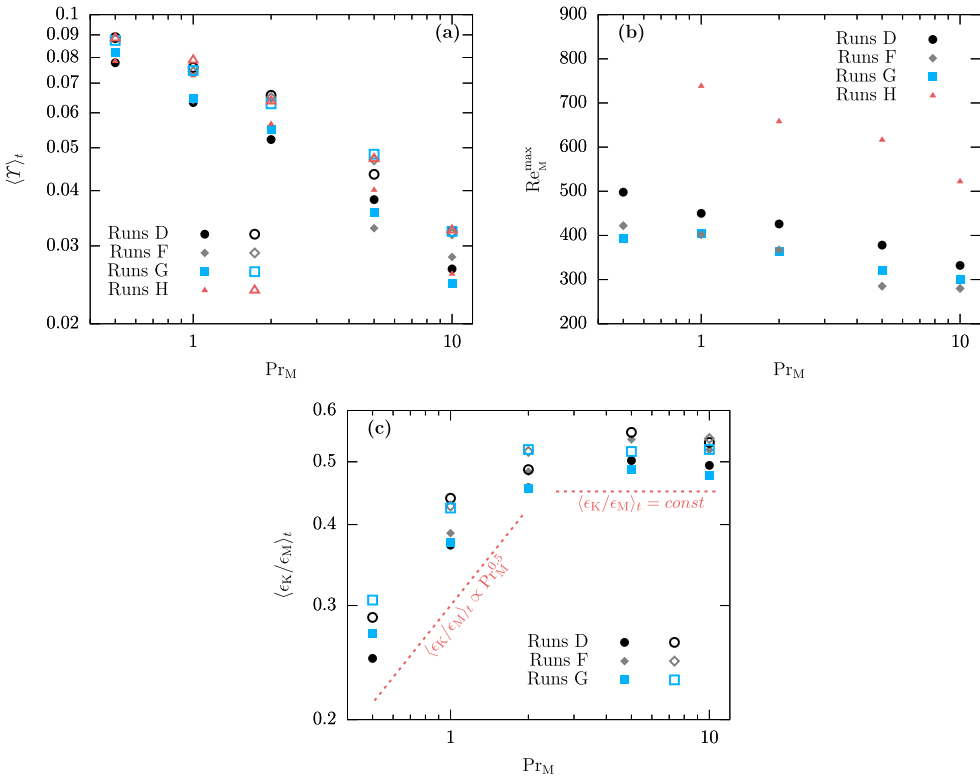


Figure 10. (a) The time averaged value of \mathcal{Y} for different run series. Filled symbols represent the result from an time averaging of all data points with $\mathcal{Y} > 0.5 \max(\mathcal{Y})$ and open symbols averaging is performed for all data with $\mathcal{Y} > 0.9 \max(\mathcal{Y})$. Errors are of the the order of 10% for the filled symbols and 5% for the open symbols, but not presented in the figure for better visualisation. (b) The maximum magnetic Reynolds number in the different DNS as a function of Pr_M . (c) The time averaged ratio of viscous over Joule dissipation, $\langle \epsilon_K/\epsilon_M \rangle_t$, as a function of Pr_M . Again, for filled symbols, the average of ϵ_K/ϵ_M is calculated for all values $\epsilon_K/\epsilon_M > 0.5 \max(\epsilon_K/\epsilon_M)$ and for open symbols, averaging is performed for $\epsilon_K/\epsilon_M > 0.9 \max(\epsilon_K/\epsilon_M)$ (colour online).

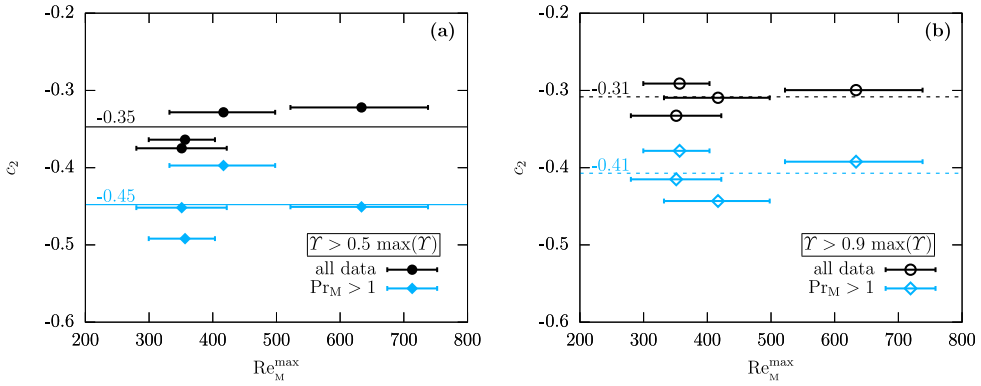


Figure 11. The slope resulting from a fit of the function $\langle \mathcal{Y} \rangle_t = c_1 \text{Pr}_M^{c_2}$ to the data points presented in figure 10(a) as a function of the range of maximum magnetic Reynolds numbers found in simulations shown in figure 10(b). The horizontal bars indicate the range of Re_M^{\max} , which decreases from small to large Pr_M . Results for the fitting to all data are shown as black symbols and results for using $\text{Pr}_M > 1$ as blue diamonds. Horizontal lines indicate the average values of the slopes. (a) $\langle \mathcal{Y} \rangle_t$ has been obtained using all data with $\mathcal{Y} > 0.5 \max(\mathcal{Y})$. (b) $\langle \mathcal{Y} \rangle_t$ has been obtained using all data with $\mathcal{Y} > 0.9 \max(\mathcal{Y})$ (colour online).

of u_{rms} with increasing Pr_M . As discussed in the previous section, a change of Re_M in DNS with $k_\lambda < k_1$ can only be achieved by changing μ_0 .

We now check if a power-law fit, $\langle \mathcal{Y} \rangle_t = c_1 \text{Pr}_M^{c_2}$, is consistent with the data of the fit parameters c_1 and c_2 . Both averaging conditions, using all data points for which $\mathcal{Y} > 0.5 \max(\mathcal{Y})$ and $\mathcal{Y} > 0.9 \max(\mathcal{Y})$, are considered. The results for the full range of Pr_M as well as for $\text{Pr}_M > 1$ can be found in the appendix in table A1. Additionally, we present the slopes c_2 as a function of the corresponding range of $\text{Re}_{M,\max}$ in figure 11. Fit results to the $\mathcal{Y} > 0.5 \max(\mathcal{Y})$ condition are shown in figure 11(a) and the case of $\mathcal{Y} > 0.9 \max(\mathcal{Y})$ in figure 11(b). The obtained value of c_2 is presented for fitting to all available data as black symbols and for $\text{Pr}_M > 1$ as blue ones. We do not find a clear dependence of c_2 on the Reynolds number range. When using data for the full Pr_M regime explored in this paper, we find mean slopes between $c_2 = -0.31$ and -0.35 . The slope of the function $\langle \mathcal{Y} \rangle_t(\text{Pr}_M)$ becomes steeper with values between $c_2 = -0.41$ and $c_2 = -0.45$, when fitting only to data with $\text{Pr}_M > 1$. The latter should be a better description for the large Prandtl number regime, since the scaling of $\langle \mathcal{Y} \rangle_t$ might change in the transition from $\text{Pr}_M < 1$ to $\text{Pr}_M > 1$.

4. Chiral magnetically driven turbulence in the early Universe

The findings from DNS presented above can be leveraged to estimate the turbulent velocities and the Reynolds number in the early Universe. As we have seen in the previous section, the ratio of kinetic to magnetic energy depends on the magnetic Prandtl number. Hence, as a first step we estimate the value of Pr_M in the early Universe. Afterwards we estimate u_{rms} and the magnetic Reynolds number for chiral magnetically driven turbulence.

4.1. Magnetic Prandtl number

The magnetic Prandtl number has been defined before as the ratio of viscosity over magnetic diffusivity. Hence it measures the relative strength of these two transport coefficients.

The derivation of transport coefficients in weakly coupled high temperature gauge theories has been presented in Arnold *et al.* (2000) for various matter field content.

For the electric conductivity, Arnold *et al.* (2000) found a leading term (converted from natural to cgs units)

$$\sigma_{\text{el}} = \frac{\kappa_{\sigma}}{4\pi \alpha_{\text{em}} \log((4\pi \alpha_{\text{em}})^{-1/2})} \frac{k_{\text{B}} T}{\hbar} \quad (23)$$

with $\kappa_{\sigma} = 11.9719$ for the largest number of species considered. The magnetic resistivity in the early Universe follows as

$$\begin{aligned} \eta(T) &= \frac{c^2}{4\pi \sigma_{\text{el}}} = \frac{\alpha_{\text{em}}}{\kappa_{\sigma}} \log((4\pi \alpha_{\text{em}})^{-1/2}) \frac{\hbar c^2}{k_{\text{B}} T} \\ &\approx 7.3 \times 10^{-4} \frac{\hbar c^2}{k_{\text{B}} T} \approx 4.3 \times 10^{-9} T_{100}^{-1} \text{ cm}^2 \text{ s}^{-1}. \end{aligned} \quad (24)$$

Here, $T_{100} \equiv 1.2 \times 10^{15}$ K, so that $k_{\text{B}} T_{100} = 100$ GeV.

For the shear dynamic viscosity, $\tilde{\nu}_{\text{shear}}$, Arnold *et al.* (2000) report

$$\tilde{\nu}_{\text{shear}} = \frac{\kappa_{\text{shear}}}{\alpha_{\text{em}}^2 \log(\alpha_{\text{em}}^{-1})} \frac{(k_{\text{B}} T)^3}{\hbar^2 c^3} \quad (25)$$

with $\kappa_{\text{shear}} \approx 147.627$ for the largest number of species considered. The kinematic viscosity is determined by $\nu = \tilde{\nu}_{\text{shear}}/\bar{\rho}$ with the mean density in the early Universe being

$$\bar{\rho} = \frac{\pi^2}{30} g_* \frac{(k_{\text{B}} T)^4}{\hbar^3 c^5} \approx 7.6 \times 10^{26} g_{100} T_{100}^4 \text{ g cm}^{-3}, \quad (26)$$

where $g_{100} \equiv g_*/100$ and $g_* = 106.75$ is the effective number of degrees of freedom at $T \approx 100$ GeV in the Standard Model. Dividing equation (25) by (26) we find the kinematic viscosity

$$\nu = \frac{30\kappa_{\text{shear}}}{\pi^2 g_* \alpha_{\text{em}}^2 \log(\alpha_{\text{em}}^{-1})} \frac{\hbar c^2}{k_{\text{B}} T} \approx 1.6 \times 10^4 \frac{\hbar c^2}{k_{\text{B}} T} \approx 9.4 \times 10^{-2} T_{100}^{-1} \text{ cm}^2 \text{ s}^{-1}. \quad (27)$$

The ratio of equations (27) and (24) yields the magnetic Prandtl number

$$\text{Pr}_{\text{M}} = \frac{\nu}{\eta} \approx 2.2 \times 10^7. \quad (28)$$

We should clarify in this context that this is the microphysical magnetic Prandtl number and not the turbulent one, which is always of the order of unity for non-stratified turbulence (Kleeorin and Rogachevskii 1994, Yousef *et al.* 2003, Jurčišinová *et al.* 2011) and independent of the physical conditions.

4.2. Magnetic Reynolds number

Assuming that the kinetic energy reaches a fraction $\Upsilon(\text{Pr}_M)$ of the magnetic energy at dynamo saturation, it is customary to estimate in physical units

$$u_{\text{rms}} \approx \left(\Upsilon(\text{Pr}_M) \frac{B_{\text{sat}}}{4\pi\rho} \right)^{1/2}. \quad (29)$$

The mean density in the early Universe is given in equation (26) and the value of B_{sat} depends on the chiral nonlinearity parameter

$$\lambda = 3\hbar c \left(\frac{8\alpha_{\text{em}}}{k_B T} \right)^2 \approx 1.3 \times 10^{-17} T_{100}^{-2} \text{ cm erg}^{-1} \quad (30)$$

and the initial chiral chemical potential μ_0 . Since the latter is unknown, we estimate it via the thermal energy density:

$$\mu_0 = \vartheta 4\alpha_{\text{em}} \frac{k_B T}{\hbar c} \approx 1.5 \times 10^{14} \vartheta T_{100} \text{ cm}^{-1}. \quad (31)$$

Due to the uncertainties in μ_0 we introduce the free parameter ϑ , allowing us to explore different initial conditions. The magnetic field produced by chiral dynamos as discussed in this paper reaches a maximum value of

$$B_{\text{sat}} = \left(4\pi \frac{\mu_0 k_\lambda}{\lambda} \right)^{1/2} \approx 6.2 \times 10^{21} \vartheta T_{100}^2 \text{ G}, \quad (32)$$

where we use equation (17) for the inverse magnetic correlation length, that results in

$$k_\lambda \approx 2.6 \times 10^{11} \vartheta T_{100} \text{ cm}^{-1}. \quad (33)$$

Following equation (29), the magnetic field drives turbulence with an rms velocity of

$$u_{\text{rms}} = 6.1 \times 10^7 \Upsilon(\text{Pr}_M)^{1/2} \vartheta \text{ cm s}^{-1}. \quad (34)$$

Finally, using equations (34), (33), and (24), we find the following value for the magnetic Reynolds number in the early Universe:

$$\text{Re}_M \approx \frac{u_{\text{rms}}}{k_\lambda \eta} \approx 5.5 \times 10^4 \Upsilon(\text{Pr}_M)^{1/2}. \quad (35)$$

Note, that the magnetic Reynolds number is based on the wavenumber k_λ which determines the maximum scale of turbulent motions. We also stress that the size of the inertial range is independent of ϑ , and hence of μ_0 . This is because both, the forcing scale k_λ and the initial energy input scale k_μ , scale linear with μ_0 . Combining the estimate given by

equation (35) together with the the extrapolation of $\mathcal{Y}(\text{Pr}_M) \approx 0.08 \text{Pr}_M^{-0.4}$ found in DNS, see section 3.3.2, we find $\text{Re}_M = \mathcal{O}(10^3)$ when using $\text{Pr}_M = \mathcal{O}(10^7)$.

5. Conclusions

In this paper, we analyse the energetics of the chiral magnetically driven turbulence. This type of turbulence is produced by the chiral dynamo instability that originates from an asymmetry between left- and right-handed fermions. This magnetic field instability is formally similar to the classical α^2 dynamo. However, while the classical α^2 dynamo requires an energy input by turbulence, the chiral dynamo creates turbulence via the Lorentz force. By solving the set of chiral MHD equations in numerical simulations, we explore the dependence of chiral magnetically driven turbulence on initial chiral asymmetries and the magnetic Prandtl number.

Our main findings from DNS may be summarised as follows:

- For a large range of parameters, it has been shown that the chiral magnetic instability generates turbulence. In this paper, we have focused on the case of small chiral nonlinearity parameters λ_μ , defined in equation (9), where turbulence becomes strong enough to affect the evolution of the magnetic field.
- The transfer of energy from the chiral chemical potential via magnetic energy to kinetic energy has been analysed in DNS. In particular, we found that the ratio of the production rate of kinetic energy over the production rate of magnetic energy, Φ , increases exponentially in time during the chiral dynamo phase. At dynamo saturation, Φ appears to approach unity, when the magnetic correlation length remains inside the numerical domain.
- A central parameter explored in our simulations is \mathcal{Y} , the ratio of kinetic over magnetic energy; see definition in equation (21). Due to the Lorentz force, the velocity field grows at a rate that is twice the one of the magnetic field strength. As a result, \mathcal{Y} increases initially exponentially. Once there is a back-reaction of the velocity field on the magnetic field, \mathcal{Y} stays approximately constant, see, e.g. figure 6(a).
- For magnetic Prandtl numbers $\text{Pr}_M = 1$, the time average of \mathcal{Y} , taken after its exponential growth phase and referred to here as $\langle \mathcal{Y} \rangle_t$, has been determined to be between 0.06 and 0.07. This value seems to be independent of the initial chiral asymmetry.
- For $\text{Pr}_M > 1$, the parameter \mathcal{Y} decreases. With our DNS we find a scaling of approximately $\mathcal{Y}(\text{Pr}_M) = 0.1 \text{Pr}_M^{-0.4}$.
- We do not find a change of the function $\mathcal{Y}(\text{Pr}_M)$ for different regimes of Re_M , however, only a small variation of Re_M has been considered and this might change when increasing the statistics and the extending the range of Re_M .

A chiral dynamo instability and hence chiral magnetically driven turbulence can only occur in extreme astrophysical environments, because a high temperature is required for the existence of a chiral asymmetry. At low energies chiral flipping reactions destroy any difference in number density between left- and right-handed fermions. As an astrophysically relevant regime, we have discussed the plasma of the early Universe. Our findings from DNS allow to estimate the magnetic Reynolds number in the early Universe.

In particular, a value of $Re_M = O(10^3)$ can be expected for chiral magnetically driven turbulence, if the chiral asymmetry is generated by thermal processes.

Note

1. <http://pencil-code.nordita.org/>.

Acknowledgments

J.S. thanks the organisers of the “2nd Conference on Natural Dynamos” for the interesting and fruitful conference held in Valtice. We are grateful to the three anonymous referees who helped improving this work with their suggestions. I.R. acknowledges the hospitality of NORDITA, the University of Colorado, the Kavli Institute for Theoretical Physics in Santa Barbara and the École Polytechnique Fédérale de Lausanne. We thank for support by the École polytechnique fédérale de Lausanne, Nordita, and the University of Colorado through the George Ellery Hale visiting faculty appointment. Simulations presented in this work have been performed with computing resources provided by the Swedish National Allocations Committee at the Center for Parallel Computers at the Royal Institute of Technology in Stockholm.

Disclosure statement

No potential conflict of interest was reported by the authors.

Funding

This project has received funding from the European Union’s Horizon 2020 research and innovation programme as ‘EPFL Fellow’ co-funded by the Marie Skłodowska-Curie Action [grant number 665667]. Support through the National Science Foundation Astrophysics and Astronomy Grant Program [grant number 1615100], the Research Council of Norway [FRINATEK grant 231444], and the European Research Council [grant number 694896] are gratefully acknowledged.

References

- Alekseev, A.Y., Cheianov, V.V. and Fröhlich, J., Universality of transport properties in equilibrium, the Goldstone theorem, and chiral anomaly. *Phys. Rev. Lett.* **1998**, **81**, 3503–3506.
- Arnold, P., Moore, G.D. and Yaffe, L.G., Transport coefficients in high temperature gauge theories (I): leading-log results. *J. High Energy Phys.* **2000**, **11**, 001.
- Biskamp, D. and Müller, W.C., Decay laws for three-dimensional magnetohydrodynamic turbulence. *Phys. Rev. Lett.* **1999**, **83**, 2195–2198.
- Blackman, E.G. and Brandenburg, A., Dynamic nonlinearity in large-scale dynamos with shear. *Astrophys. J.* **2002**, **579**, 359–373.
- Boyarsky, A., Fröhlich, J. and Ruchayskiy, O., Self-consistent evolution of magnetic fields and chiral asymmetry in the early Universe. *Phys. Rev. Lett.* **2012**, **108**, 031301.
- Boyarsky, A., Fröhlich, J. and Ruchayskiy, O., Magnetohydrodynamics of chiral relativistic fluids. *Phys. Rev. D* **2015**, **92**, 043004.
- Brandenburg, A., Magnetic Prandtl number dependence of the kinetic-to-magnetic dissipation ratio. *Astrophys. J.* **2014**, **791**, 12.
- Brandenburg, A. and Dobler, W., Hydromagnetic turbulence in computer simulations. *Comp. Phys. Comm.* **2002**, **147**, 471–475.
- Brandenburg, A., Enqvist, K. and Olesen, P., Large-scale magnetic fields from hydromagnetic turbulence in the very early universe. *Phys. Rev. D* **1996**, **54**, 1291–1300.

- Brandenburg, A., Kahniashvili, T., Mandal, S., Pol, A.R., Tevzadze, A.G. and Vachaspati, T., Evolution of hydromagnetic turbulence from the electroweak phase transition. *Phys. Rev. D* **2017a**, **96**, 123528.
- Brandenburg, A., Kahniashvili, T. and Tevzadze, A.G., Nonhelical inverse transfer of a decaying turbulent magnetic field. *Phys. Rev. Lett.* **2015**, **114**, 075001.
- Brandenburg, A., Schober, J., Rogachevskii, I., Kahniashvili, T., Boyarsky, A., Fröhlich, J., Ruchayskiy, O. and Kleeorin, N., The turbulent chiral-magnetic cascade in the early universe. *Astrophys. J. Lett.* **2017b**, **845**, L21.
- Brandenburg, A., Computational aspects of astrophysical MHD and turbulence. In *Advances in Non-linear Dynamics*, edited by A. Ferriz-Mas and M. Núñez (Taylor & Francis: London, pp. 269–344), 2003.
- Dermer, C.D., Cavadini, M., Razzaque, S., Finke, J.D., Chiang, J. and Lott, B., Time delay of cascade radiation for TeV blazars and the measurement of the intergalactic magnetic field. *Astrophys. J. Lett.* **2011**, **733**, L21.
- Field, G.B. and Carroll, S.M., Cosmological magnetic fields from primordial helicity. *Phys. Rev. D* **2000**, **62**, 103008.
- Fröhlich, J. and Pedrini, B., New applications of the chiral anomaly. In *Mathematical Physics 2000*, edited by A.S. Fokas, A. Grigoryan, T. Kibble and B. Zegarlinski, International Conference on Mathematical Physics 2000 (Imperial college: London), 2000. arXiv:hep-th/0002195.
- Fröhlich, J. and Pedrini, B., Axions, quantum mechanical pumping, and primeval magnetic fields. In *Statistical Field Theory*, edited by A. Cappelletti and G. Mussardo (Kluwer: New York/Amsterdam), 2002. arXiv:cond-mat/0201236.
- Fukushima, K., Kharzeev, D.E. and Warringa, H.J., The chiral magnetic effect. *Phys. Rev. D* **2008**, **78**, 074033.
- Grasso, D. and Rubinstein, H.R., Magnetic fields in the early Universe. *Phys. Rep.* **2001**, **348**, 163–266.
- Joyce, M. and Shaposhnikov, M., Primordial magnetic fields, right electrons, and the Abelian anomaly. *Phys. Rev. Lett.* **1997**, **79**, 1193–1196.
- Jurčišinová, E., Jurčišin, M. and Remecký, R., Turbulent magnetic Prandtl number in kinematic magnetohydrodynamic turbulence: Two-loop approximation. *Phys. Rev. E* **2011**, **84**, 046311.
- Kahniashvili, T., Tevzadze, A.G., Brandenburg, A. and Neronov, A., Evolution of primordial magnetic fields from phase transitions. *Phys. Rev. D* **2013**, **87**, 083007.
- Kazantsev, A.P., Enhancement of a magnetic field by a conducting fluid. *J. Exp. Theor. Phys.* **1968**, **26**, 1031.
- Kemel, K., Brandenburg, A. and Ji, H., Model of driven and decaying magnetic turbulence in a cylinder. *Phys. Rev. E* **2011**, **84**, 056407.
- Kharzeev, D.E., McLerran, L.D. and Warringa, H.J., The effects of topological charge change in heavy ion collisions: ‘event by event P and CP violation’. *Nucl. Phys.* **2008**, **A803**, 227–253.
- Kleeorin, N., Moss, D., Rogachevskii, I. and Sokoloff, D., Helicity balance and steady-state strength of the dynamo generated galactic magnetic field. *Astro. and Astrophys.* **2000**, **361**, L5–L8.
- Kleeorin, N. and Rogachevskii, I., Effective Ampère force in developed magnetohydrodynamic turbulence. *Phys. Rev. E* **1994**, **50**, 2716–2730.
- Kleeorin, N., Rogachevskii, I. and Ruzmaikin, A., Magnitude of the dynamo-generated magnetic field in solar-type convective zones. *Astro. and Astrophys.* **1995**, **297**, 159–167.
- Kleeorin, N. and Ruzmaikin, A., Dynamics of the average turbulent helicity in a magnetic field. *Magnetohydrodynamics* **1982**, **2**, 17–24.
- Krause, F. and Rädler, K.H., *Mean-field magnetohydrodynamics and dynamo theory*, **1980** (Oxford: Pergamon).
- Kulsrud, R.M. and Anderson, S.W., The spectrum of random magnetic fields in the mean field dynamo theory of the Galactic magnetic field. *Astrophys. J.* **1992**, **396**, 606–630.
- Kulsrud, R.M. and Zweibel, E.G., On the origin of cosmic magnetic fields. *Rep. Prog. Phys.* **2008**, **71**, 046901.
- Moffatt, H.K., *Magnetic field generation in electrically conducting fluids*, **1978** (Cambridge: Cambridge University Press).

- Neronov, A. and Vovk, I., Evidence for strong extragalactic magnetic fields from Fermi observations of TeV blazars. *Science* **2010**, **328**, 73–75.
- Parker, E.N., Hydromagnetic dynamo models. *Astrophys. J.* **1955**, **122**, 293–314.
- Redlich, A.N. and Wijewardhana, L.C.R., Induced Chern-Simons terms at high temperatures and finite densities. *Phys. Rev. Lett.* **1985**, **54**, 970–973.
- Rogachevskii, I., Ruchayskiy, O., Boyarsky, A., Fröhlich, J., Kleeorin, N., Brandenburg, A. and Schober, J., Laminar and turbulent dynamos in chiral magnetohydrodynamics-I: theory. *Astrophys. J.* **2017**, **846**, 153.
- Rogachevskii, I., Kleeorin, N., Brandenburg, A. and Eichler, D., Cosmic ray current-driven turbulence and mean-field dynamo effect. *Astrophys. J.* **2012**, **753**, 6.
- Schober, J., Rogachevskii, I., Brandenburg, A., Boyarsky, A., Fröhlich, J., Ruchayskiy, O. and Kleeorin, N., Laminar and turbulent dynamos in chiral magnetohydrodynamics. II. Simulations. *Astrophys. J.* **2018**, **858**, 124.
- Son, D.T. and Surowka, P., Hydrodynamics with triangle anomalies. *Phys. Rev. Lett.* **2009**, **103**, 191601.
- Steenbeck, M., Krause, F. and Rädler, K.H., Berechnung der mittleren Lorentz-Feldstärke $\overline{\mathbf{v} \times \mathbf{B}}$ für ein elektrisch leitendes Medium in turbulenter, durch Coriolis-Kräfte beeinflusster Bewegung. *Zeitschrift Naturforschung Teil A* **1966**, **21**, 369–376.
- Subramanian, K., The origin, evolution and signatures of primordial magnetic fields. *Rep. Prog. Phys.* **2016**, **79**, 076901.
- Tsokos, K., Topological mass terms and the high temperature limit of chiral gauge theories. *Phys. Lett. B* **1985**, **157**, 413–415.
- Vilenkin, A., Equilibrium parity violating current in a magnetic field. *Phys. Rev. D* **1980**, **22**, 3080–3084.
- Williamson, J.H., Low-storage Runge-Kutta schemes. *J. Comp. Phys.* **1980**, **35**, 48–56.
- Yousef, T.A., Brandenburg, A. and Rüdiger, G., Turbulent magnetic Prandtl number and magnetic diffusivity quenching from simulations. *Astro. and Astrophys.* **2003**, **411**, 321–327.
- Zrake, J., Inverse cascade of nonhelical magnetic turbulence in a relativistic fluid. *Astrophys. J. Lett.* **2014**, **794**, L26.

Appendix. Table of fit results

Table A1. Fit results for $\langle \mathcal{Y} \rangle_t = c_1 \text{Pr}_M^{c_2}$.

Series	c_1 (all Pr_M)	c_2 (all Pr_M)	c_1 ($\text{Pr}_M > 1$)	c_2 ($\text{Pr}_M > 1$)
D (using $\mathcal{Y} > 0.5 \max(\mathcal{Y})$)	0.06	−0.33	0.07	−0.40
D (using $\mathcal{Y} > 0.9 \max(\mathcal{Y})$)	0.07	−0.31	0.09	−0.44
F (using $\mathcal{Y} > 0.5 \max(\mathcal{Y})$)	0.07	−0.37	0.07	−0.45
F (using $\mathcal{Y} > 0.9 \max(\mathcal{Y})$)	0.08	−0.33	0.09	−0.42
G (using $\mathcal{Y} > 0.5 \max(\mathcal{Y})$)	0.06	−0.36	0.08	−0.49
G (using $\mathcal{Y} > 0.9 \max(\mathcal{Y})$)	0.07	−0.29	0.08	−0.38
H (using $\mathcal{Y} > 0.5 \max(\mathcal{Y})$)	0.07	−0.32	0.08	−0.45
H (using $\mathcal{Y} > 0.9 \max(\mathcal{Y})$)	0.07	−0.30	0.08	−0.39
Mean (using $\mathcal{Y} > 0.5 \max(\mathcal{Y})$)	0.07	−0.35	0.08	−0.45
Mean (using $\mathcal{Y} > 0.9 \max(\mathcal{Y})$)	0.07	−0.31	0.09	−0.41