

אוניברסיטת בן-גוריון בנגב  
Ben-Gurion University of the Negev



# Ben-Gurion University of the Negev



# Our Purpose

Ben-Gurion University of the Negev embraces the endless potential we have as individuals and as a commonality to adapt and to thrive in changing environments.

Inspired by our location in the desert, we aim to discover, to create, and to develop solutions to dynamic challenges, to pose questions that have yet to be asked, and to push beyond the boundaries of the accepted and possible.

We believe that our vantage point in Israel's Negev desert grants us a unique point of view, which sparks our creativity, motivates our journey to understanding, and enables us to achieve the remarkable.

We believe that bridging disciplines and cultures is critical to the success of research and scholarship.

We believe in the delight of exploration, the culture of collaboration, and the cultivation of original ideas.

We invite you to set aside existing paradigms and view the world from our unconventional perspective.

In the pioneering spirit of David Ben-Gurion, we encourage you to adopt our expansive point of view and see the extraordinary power emerging from the desert – for Israel, and for the world.



# One of the top three universities in Israel



**19,357**

Students



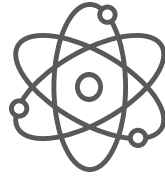
**160,000**

Alumni



**930**

Senior academic faculty,  
from a total of **6,700**  
staff members



**30%**

of students are  
enrolled in graduate  
degree programs



**3 Campuses**

- Beer-Sheva
- Sde Boker
- Eilat

**A medical center as part of the campus +  
three additional affiliated hospitals**

**Hi-tech park adjacent to campus**



# One university, embracing diversity

An international  
community including  
students from more than  
**70** countries

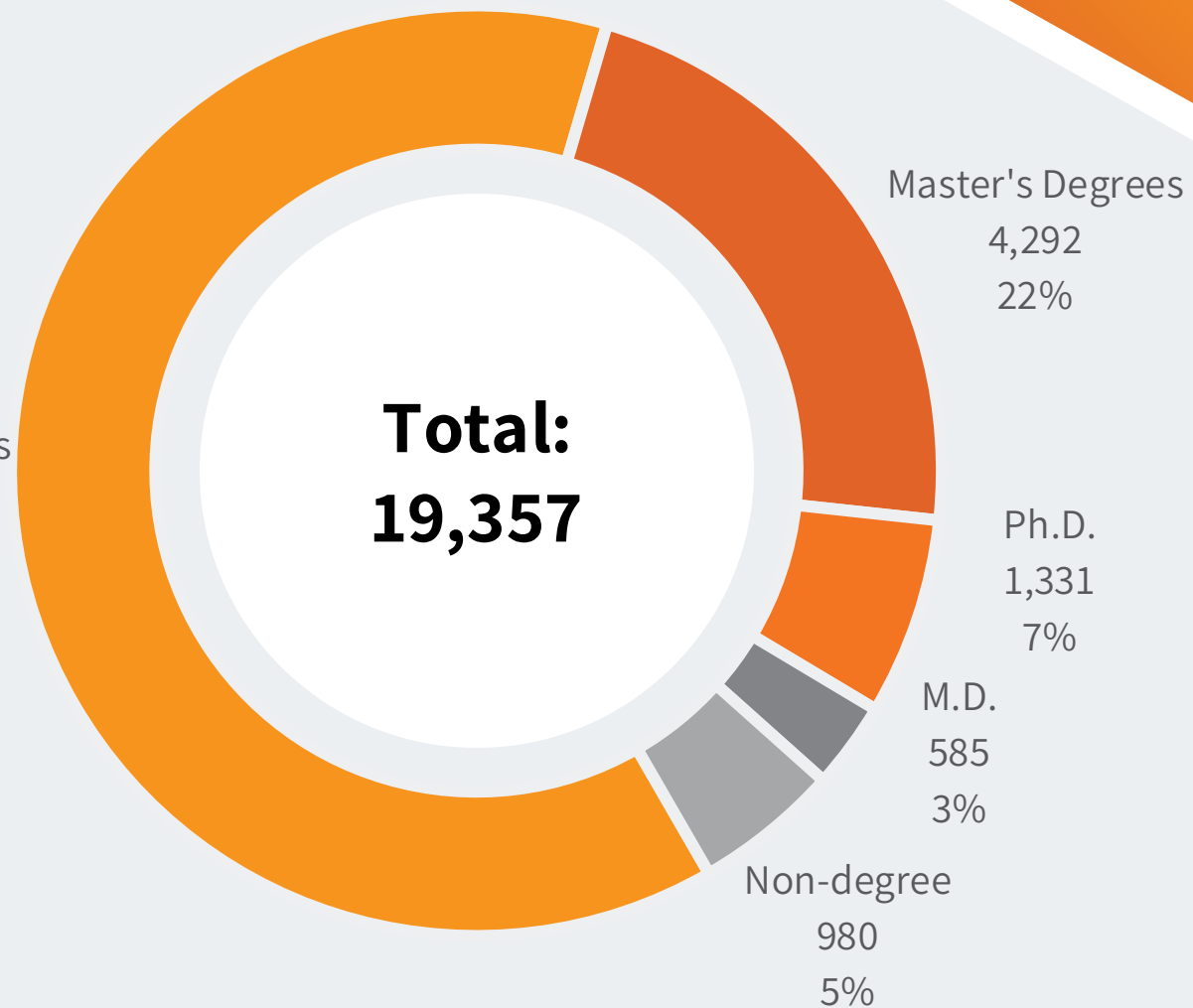


# BGU by numbers:

## Students by degree



Bachelor's  
Degrees  
12,169  
63%

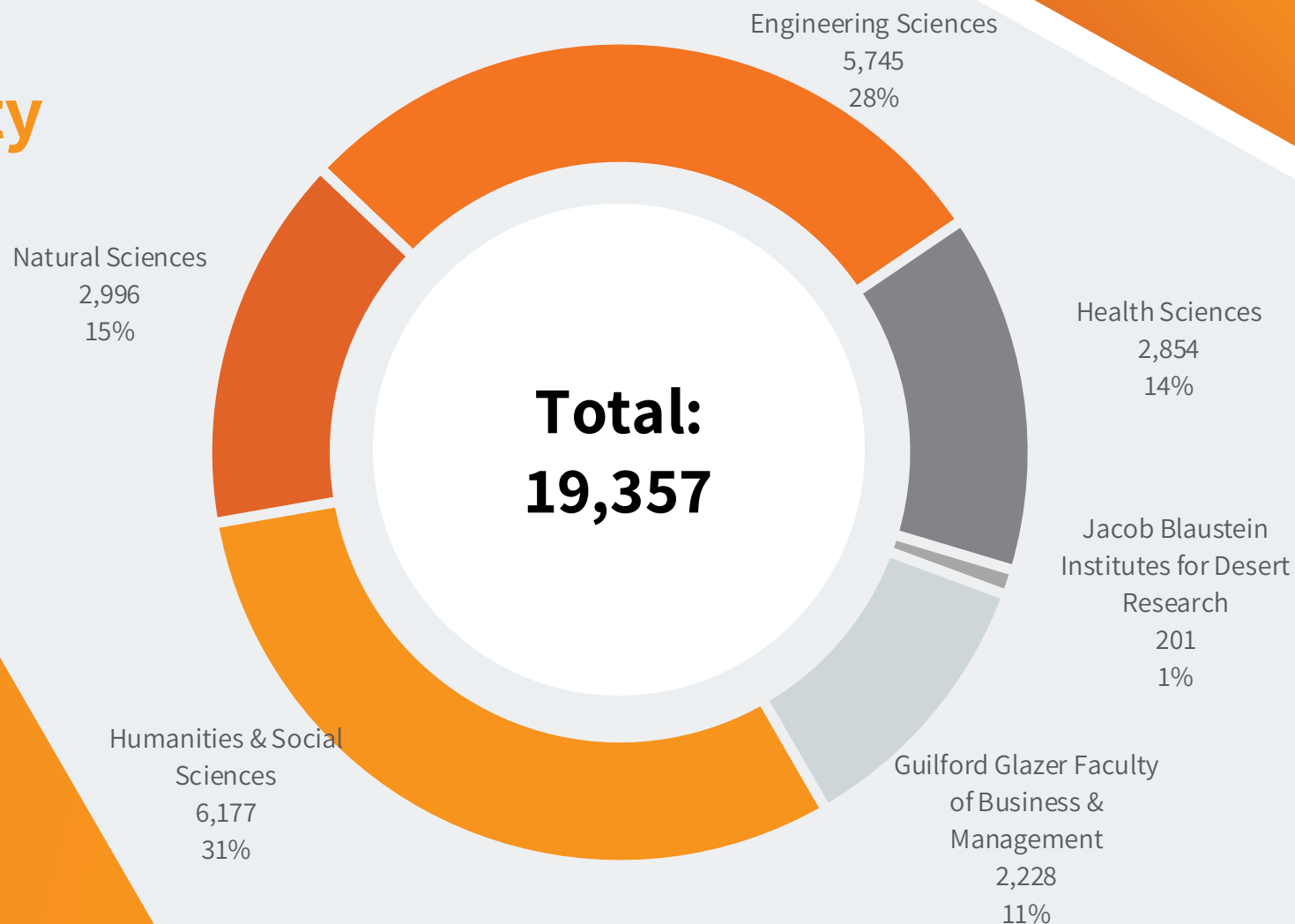


# BGU by numbers:

## Students by faculty



Graduates of the Faculty of Engineering Sciences comprise more than **30%** of all new engineers in Israel each year



# The Negev at the center

BGU realizes the vision of David Ben-Gurion, who understood that a world-class academic institution has the power to **transform the Negev region**

The University has a special mandate: development of the Negev, economically, socially, and culturally

The Negev constitutes 60% of Israel's area and houses only 11% of its population



# The University leads multiple national research institutes and projects

Ben-Gurion National  
Solar Energy Center

National Institute for  
Biotechnology in the  
Negev

Cyber Security  
Research Center &  
Cyber Emergency  
Readiness Teams  
(CERT)

Azrieli National Centre  
for Autism and  
Neurodevelopment  
Research



Heksherim  
Research Institute for  
Jewish & Israeli  
Literature & Culture

The Institute: Israel's  
National AI Program

IDF Airforce  
Pilots Academy

The Ben-Gurion  
Institute for the Study  
of Israel and Zionism



# Transformative research

Quantum

Stem cells

Psychology

Renewable  
energy

Ecology &  
environment

BrainTech

WaterTech

Space & Remote  
Sensing

Cyber Security

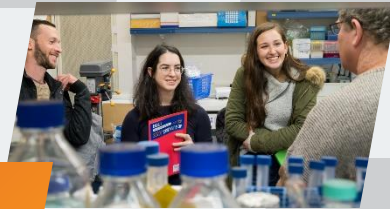
Cancer

Epidemiology

Nanotechnology

Ergonomics

Robotics





## Yazamut 360° Entrepreneurship Center

- \ A unique pre-accelerator and workspace enabling students, alumni and faculty to develop technological and social initiatives.
  - \ Dozens of initiatives already operating on site.
- 

## Cactus Capital

- \ A University \$1 million VC fund that invests in start-ups founded by BGU students.
- \ The only VC fund in Israel managed by students and with students as members of its investment committee.





The University attracts outstanding researchers and students with original and innovative ideas, as well as a social conscience, from Israel and around the world; many go on to assume leadership positions in numerous areas of life.

From the Negev to the world



**350**

startups established or managed by BGU alumni and researchers



**6,000** students involved in community outreach and social projects



# BGU Alumni make an impact



**Ziv Aviram**

Co-founder and CEO,  
Mobileye



**Ronit Atad**

CEO, Microsoft Israel



**Prof. Alon Chen**

President, Weizmann  
Institute of Science



**Dr. Tal Zaks**

Former chief medical officer  
at Moderna, developer of a  
Coronavirus vaccine



**Dr. Efrat Baron-Harlev**

Director,  
Beilinson Medical Center



**Juman Jubran**

Olympic athlete and doctoral  
student in biotechnology  
engineering



**Tomer Cohen**

Chief Product Officer,  
LinkedIn



**Itay Yogev**

AI Group General  
Manager, Intel



**Col. (res.) Dr. Tarif Badar**

Director, Kaplan Medical Center;  
former Surgeon General, IDF  
Medical Corps



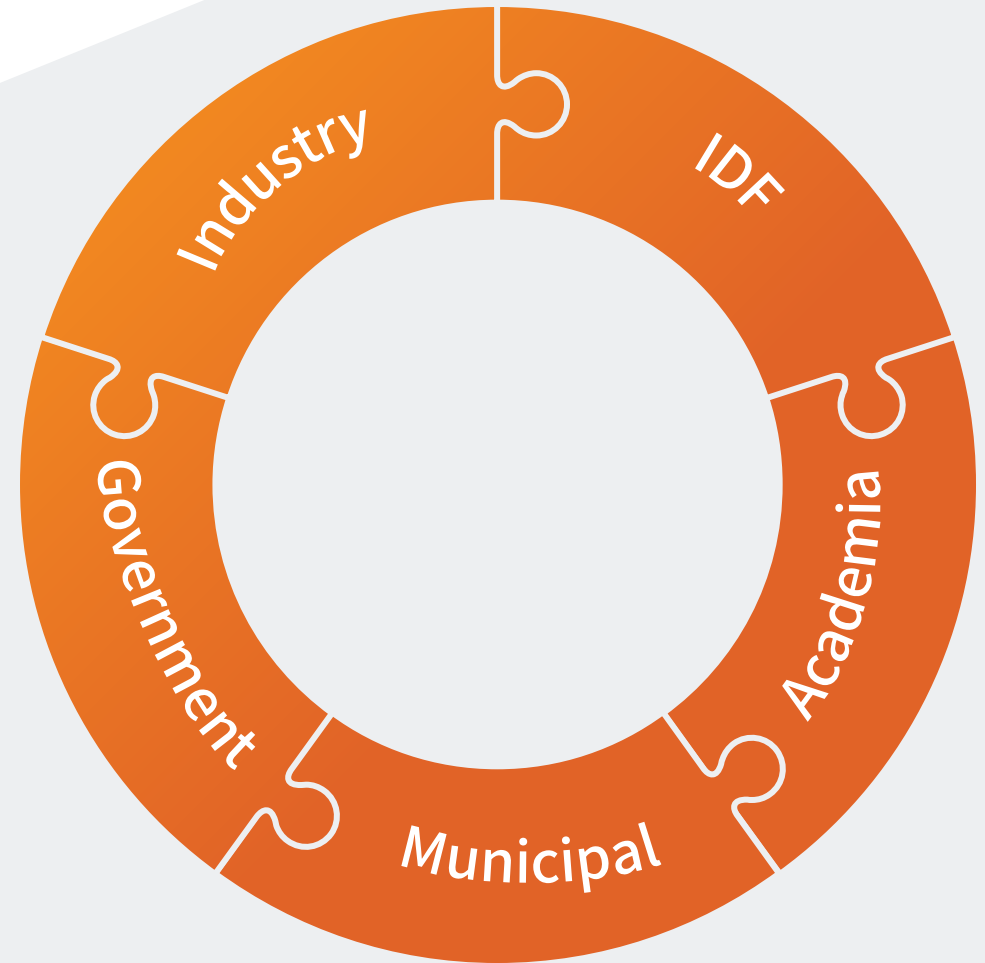
**Avi Blasberger**

Former Director General,  
Israel Space Agency



# Transforming the Negev

Building a powerful ecosystem –  
all within a square mile



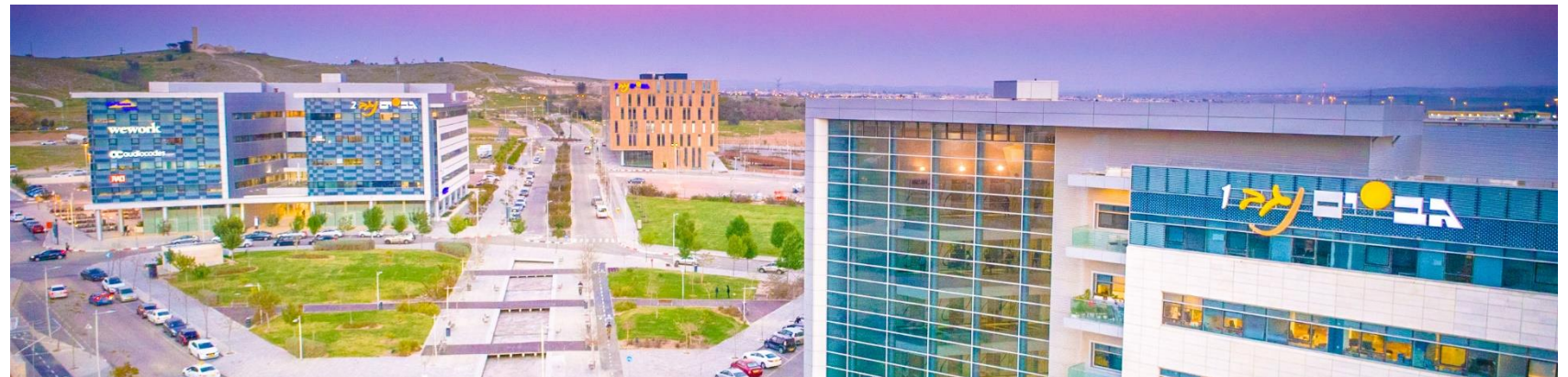
# BGU Advanced Technologies Park (ATP)

- Home to R&D centers of leading global corporations
- Students work at ATP and gain practical experience
- Graduates go on to careers in hi-tech



# Cybersecurity ecosystem

- Leading global hi-tech companies, accelerators and startups all reside in the ATP



# The ATP generates economic and social change in the Negev

3,000 employees,  
82% live in the region

Final target: 11,000 employees

Total area: 500,000 m<sup>2</sup>  
Floor space: 175,000 m<sup>2</sup>

Adjacent residential neighborhood



# North Campus expansion

26 advanced lab and classroom buildings

230,000 m<sup>2</sup>

Dorms for 1,000 students,  
including couples and families

Conference and culture center



# Ben-Gurion University of the Negev **and the IDF relocation to the South**



# A national project at unprecedented scale

Israel's government has decided to relocate major IDF bases in the south as part of its policy to develop and strengthen the Negev economy and fulfill the vision of Israel's first prime minister, David Ben-Gurion.

The move is the largest-scale national project ever, and is already transforming the Negev's and Israel's society and economy



Beyond being the most ambitious infrastructure project, the IDF's relocation southward creates thousands of jobs, attracts the technology industry to the region, increases consumption, and supports the transformation of the Negev into a national-level population center.

Similarly, it leads to increased investments in regional health, education, and transportation and supports the development of advanced civilian infrastructures.



# Strategic National Plan to Develop the Negev

## Rippling economic impact

Investment  
in civilian  
infrastructures to  
attract population  
growth

Development of  
industry and  
hi-tech

Influx of quality  
personnel and their  
families

Investment in  
infrastructure and  
services to  
IDF bases





# IDF redeployment in the Negev

IDF redeployment to the Negev:  
More than 30,000 soldiers  
involved

Telecommunications and Military  
Intelligence Directorate has  
moved to the Negev

Joint challenge for IDF and BGU:  
Retention of human capital





BGU North Campus

Ben-Gurion University of the Negev

Soroka University  
Medical Center

Advanced  
Technologies  
Park

IDF digital technology complex  
*C4i campus*

**IDF's elite  
technology  
units  
relocated  
next to BGU**



# Comprehensive university

Interdisciplinary research and teaching



Faculty of Humanities  
and Social Sciences



Faculty of Natural  
Sciences



Faculty of Engineering  
Sciences



Faculty of Health  
Sciences



Stein Faculty of Computer  
and Information Science



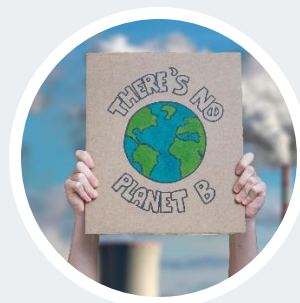
Guilford Glazer Faculty  
of Business and  
Management



Young Family School for  
the Human Experience



Jacob Blaustein Institutes for  
Desert Research, and Albert  
Katz International School for  
Desert Studies



Goldman-Sonnenfeldt  
School of Sustainability  
and Climate Change



School of Brain  
Sciences and  
Cognition



Program in  
Statistics and  
Data Analysis



# Faculty of Natural Sciences

- \ Chemistry
- \ Computer Science
- \ Geological & Environmental Sciences
- \ Life Sciences
- \ Mathematics
- \ Physics

## Study Programs:

- \ 'Ashalim' for outstanding students in natural sciences
- \ Bio-informatics
- \ Cybersecurity
- \ Data Sciences
- \ Marine Biology & Biotechnology
- \ Nanotechnology
- \ Psychobiology
- \ Software Engineering



# Faculty of Humanities and Social Sciences

- \ African Studies
- \ Arabic Language & Culture
- \ Archaeology
- \ Arts
- \ Behavioral Sciences
- \ Bible Studies & the Ancient Near East
- \ Brain & Cognitive Sciences
- \ Communication Studies
- \ Conflict Management & Resolution
- \ Economics, Accountancy
- \ Education
- \ Foreign Literatures & Linguistics
- \ Gender Studies
- \ General History
- \ Geography & Environmental Development
- \ Hebrew Language
- \ Hebrew Literature
- \ Jewish History
- \ Jewish Thought
- \ Israel Studies
- \ Middle East Studies
- \ Multidisciplinary Studies
- \ Philosophy
- \ Politics & Government
- \ Psychology
- \ Social Work
- \ Sociology & Anthropology
- \ Science & Technology Education
- \ Statistics



# Faculty of Engineering Sciences

- \ Materials Engineering
- \ Mechanical Engineering
- \ Nuclear Engineering
- \ Safety Engineering & Management
- \ Structural Engineering
- \ Biomedical Engineering
- \ Biotechnology Engineering
- \ Chemical Engineering
- \ Data Mining and Business Intelligence
- \ Energy Engineering
- \ Environmental Engineering
- \ Industrial Engineering & Management
- \ Communication Systems Engineering
- \ Photonics & Electro-Optics Engineering
- \ Electrical & Computer Engineering



# Faculty of Health Sciences

- \ Joyce and Irving Goldman Medical School

- \ Medical School for International Health

- \ **Recanati School for Community Health Professions**

- \ Emergency Medicine

- \ Nursing

- \ Physiotherapy

- \ Occupational Therapy\*

- \ School for Continuing Medical Education

- \ **School of Public Health**

- \ Gerontology

- \ Epidemiology

- \ Public Health

- \ Health System Policy & Management

- \ **School of Bio-Medical Sciences**

- \ School of Medical Laboratory Science

- \ School of Pharmacy

- \ Clinical Biochemistry & Pharmacology

- \ Microbiology, Immunology & Genetics

- \ Physiology & Cell Biology



# Guilford Glazer Faculty of Business and Management

- \ Business Administration
- \ Health Systems Management
- \ Hotel and Tourism Management
- \ Management
- \ Public Policy and Administration
- \ Executive MBA Program
- \ Mandel Social Leadership MBA Program
- \ International MBA Program



# Jacob Blaustein Institutes for Desert Research

- \\ Albert Katz International School for Desert Studies
- \\ Ben-Gurion National Solar Energy Center
- \\ **French Associates Institute for Agriculture & Biotechnology of Drylands**
  - \\ Dryland Biotechnologies
  - \\ Dryland Agriculture
- \\ **Swiss Institute for Dryland Environmental & Energy Research**
  - \\ Desert Ecology
  - \\ Solar Energy & Environmental Physics
- \\ **Zuckerberg Institute for Water Research**
  - \\ Desalination & Water Treatment
  - \\ Environmental Hydrology & Microbiology



# Stein Faculty of Computer and Information Science

## Research Institutes:

- \ Institute for the Theory of Computing
- \ Institute for the Foundations of AI
- \ Institute for Applied AI Research
- \ Institute for Interdisciplinary Computational Science
- \ Institute for Software, Systems and Security (S<sup>3</sup>)

## Undergraduate Programs:

- \ Computer Science
- \ Information Systems Engineering
- \ Data Engineering
- \ Software Engineering



# Goldman Sonnenfeldt School of Sustainability and Climate Change

Israel's leading school for sustainability studies

- Ben-Gurion University is situated at the heart of a desert area, where the need to find sustainable solutions to climate problems is existential.
- Over the last five decades BGU's best researchers have engaged in problem-based research to develop solutions to living in a resource-scarce desert environment, in a range of fields:



Climate  
and climate  
change



Reduction in  
the use of  
pollutant  
sources

Public Health:  
Effects of hot  
environment  
on human  
health

Alternative  
energies and  
cooling  
technologies

Food security



Solutions to  
water scarcity  
and degradation



# Student life & campus environment

The University is known for its lively campus life

Students create and shape an urban culture

They are socially involved and active in the community

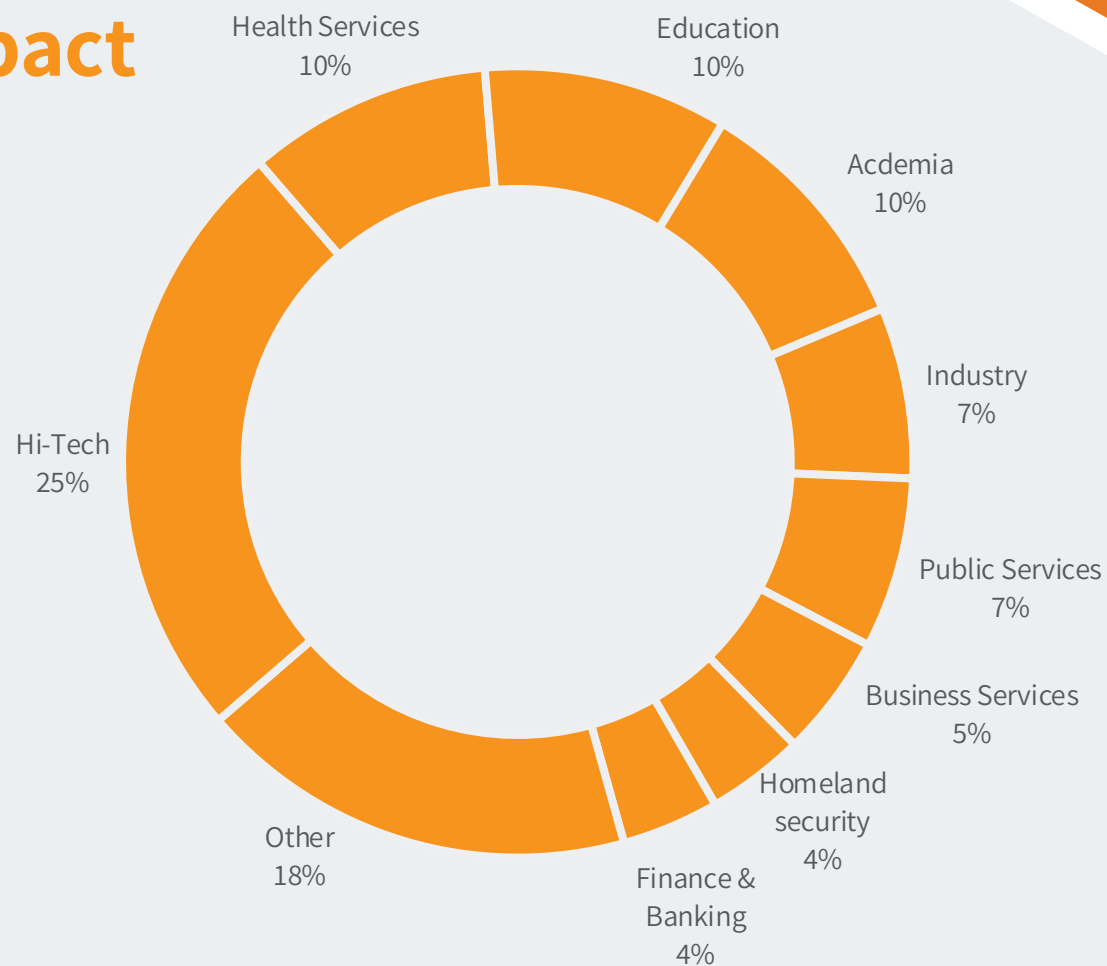


# Fulfilling the Vision: BGU Alumni make an impact



**+30%** of alumni work in the  
Beer-Sheva vicinity

**40%+** of ATP employees are  
BGU graduates





# Thank You

